

# Human Development Indices and Indicators: 2018 Statistical Update

## Briefing note for countries on the 2018 Statistical Update

### Timor-Leste



#### Introduction

This briefing note is organized into ten sections. The first section presents information on the country coverage and methodology of the 2018 Statistical Update. The next five sections provide information about key indicators of human development including the Human Development Index (HDI), the Inequality-adjusted Human Development Index (IHDI), the Gender Development Index (GDI), the Gender Inequality Index (GII) and a section with five dashboards.

This Statistical Update does not contain the Multidimensional Poverty Index (MPI). This year, the MPI was computed using the methodology jointly revised by the Oxford Poverty and Human Development Initiative (OPHI) and the Human Development Report Office (HDRO) and it will be available in due course.

It is important to note that national and international data can differ because international agencies standardize national data to allow comparability across countries and in some cases may not have access to the most recent national data.

#### Country coverage and the methodology of the 2018 Statistical Update

The 2018 Statistical Update presents the 2017 HDI (values and ranks) for 189 countries and UN-recognized territories, along with the IHDI for 151 countries, the GDI for 164 countries, and the GII for 160 countries. It is misleading to compare values and rankings with those of previously published reports, because of revisions and updates of the underlying data and adjustments to goalposts. Readers are advised to assess progress in HDI values by referring to table 2 ('Human Development Index Trends') in the 2018 Statistical Update. Table 2 is based on consistent indicators, methodology and time-series data and, thus, shows real changes in values and ranks over time, reflecting the actual progress countries have made. Small changes in values should be interpreted with caution as they may not be statistically significant due to sampling variation. Generally speaking, changes at the level of the third decimal place in any of the composite indices are considered insignificant.

Unless otherwise specified in the source, tables use data available to HDRO as of 15 July 2018. All indices and indicators, along with technical notes on the calculation of composite indices, and additional source information are available online at <http://hdr.undp.org/en/data>

For further details on how each index is calculated please refer to [Technical Notes 1-5](#) and the associated background papers available on the Human Development Report website: <http://hdr.undp.org/en/data>

#### Human Development Index (HDI)

The HDI is a summary measure for assessing long-term progress in three basic dimensions of human development: a long and healthy life, access to knowledge and a decent standard of living. A long and healthy life is measured by life expectancy. Knowledge level is measured by mean years of education among the adult population, which is the average number of years of education received in a life-time by people aged 25 years and older; and access to learning and knowledge by expected years of schooling for children of school-entry age, which is the total number of years of schooling a child of school-entry age can expect to receive if prevailing patterns of age-specific enrolment rates stay the same throughout the child's life. Standard of living is measured by Gross National Income (GNI) per capita expressed in constant 2011 international dollars converted using purchasing power parity (PPP) conversion rates. For more details see [Technical Note 1](#).

To ensure as much cross-country comparability as possible, the HDI is based primarily on international data from the United Nations Population Division (the life expectancy data), the United Nations Educational, Scientific and Cultural Organization Institute for Statistics (the mean years of schooling and expected years of schooling data) and the World Bank (the GNI per capita data). As stated in the introduction, the HDI values and ranks in this Statistical Update are not comparable to those in past reports because of a number of revisions to the component indicators. To allow for assessment of progress in HDIs, the 2018 Statistical Update includes recalculated HDIs from 1990 to 2017 using consistent series of data.

### Timor-Leste's HDI value and rank

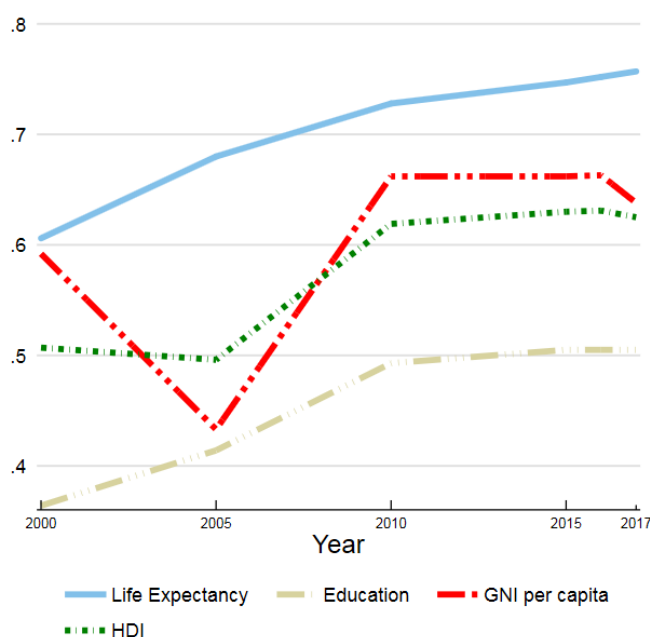
Timor-Leste's HDI value for 2017 is 0.625— which put the country in the medium human development category—positioning it at 132 out of 189 countries and territories. Between 2000 and 2017, Timor-Leste's HDI value increased from 0.507 to 0.625, an increase of 23.3 percent. Table A reviews Timor-Leste's progress in each of the HDI indicators. Between 1990 and 2017, Timor-Leste's life expectancy at birth increased by 20.7 years, mean years of schooling increased by 1.7 years and expected years of schooling increased by 3.0 years. Timor-Leste's GNI per capita decreased by about 0.1 percent between 1995 and 2017.

**Table A: Timor-Leste's HDI trends based on consistent time series data and new goalposts**

	Life expectancy at birth	Expected years of schooling	Mean years of schooling	GNI per capita (2011 PPP\$)	HDI value
1990	48.5				
1995	53.7			6,852	
2000	59.4	9.8	2.8	5,030	0.507
2005	64.2	11.0	3.3	1,758	0.496
2010	67.3	12.4	4.4	8,005	0.619
2015	68.6	12.8	4.5	8,003	0.630
2016	68.9	12.8	4.5	8,045	0.631
2017	69.2	12.8	4.5	6,846	0.625

Figure 1 below shows the contribution of each component index to Timor-Leste's HDI since 2000.

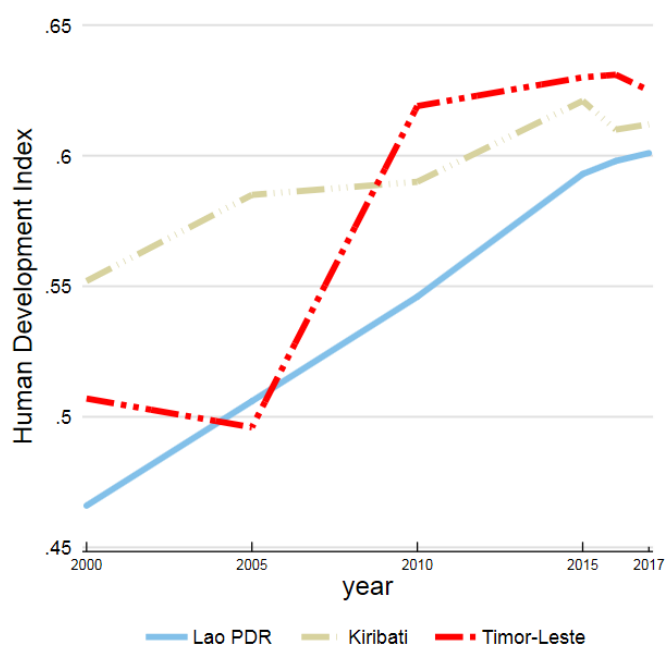
**Figure 1: Trends in Timor-Leste's HDI component indices 2000-2017**



## Assessing progress relative to other countries

The human development progress, as measured by the HDI, can usefully be compared to other countries. For instance, during the period between 2000 and 2017 Timor-Leste, Lao People's Democratic Republic and Kiribati experienced different degrees of progress toward increasing their HDIs (see figure 2).

**Figure 2: HDI trends for Timor-Leste, Lao People's Democratic Republic and Kiribati, 2000-2017**



Timor-Leste's 2017 HDI of 0.625 is below the average of 0.645 for countries in the medium human development group and below the average of 0.733 for countries in East Asia and the Pacific. From East Asia and the Pacific, countries which are close to Timor-Leste in 2017 HDI rank and to some extent in population size are Fiji and Solomon Islands, which have HDIs ranked 92 and 152 respectively (see table B).

**Table B: Timor-Leste's HDI and component indicators for 2017 relative to selected countries and groups**

	HDI value	HDI rank	Life expectancy at birth	Expected years of schooling	Mean years of schooling	GNI per capita (PPP US\$)
<b>Timor-Leste</b>	0.625	132	69.2	12.8	4.5	6,846
<b>Fiji</b>	0.741	92	70.4	15.3	10.8	8,324
<b>Solomon Islands</b>	0.546	152	71.0	10.2	5.5	1,872
<b>East Asia and the Pacific</b>	0.733	—	74.7	13.3	7.9	13,688
<b>Medium HDI</b>	0.645	—	69.1	12.0	6.7	6,849

### Inequality-adjusted HDI (IHDI)

The HDI is an average measure of basic human development achievements in a country. Like all averages, the HDI masks inequality in the distribution of human development across the population at the country level. The 2010 HDR introduced the IHDI, which takes into account inequality in all three

dimensions of the HDI by ‘discounting’ each dimension’s average value according to its level of inequality. The IHDI is basically the HDI discounted for inequalities. The ‘loss’ in human development due to inequality is given by the difference between the HDI and the IHDI, and can be expressed as a percentage. As the inequality in a country increases, the loss in human development also increases. We also present the coefficient of human inequality as a direct measure of inequality which is an unweighted average of inequalities in three dimensions. The IHDI is calculated for 151 countries. For more details see [Technical Note 2](#).

Timor-Leste’s HDI for 2017 is 0.625. However, when the value is discounted for inequality, the HDI falls to 0.452, a loss of 27.7 percent due to inequality in the distribution of the HDI dimension indices. The average loss due to inequality for medium HDI countries is 25.1 percent and for East Asia and the Pacific it is 15.6 percent. The Human inequality coefficient for Timor-Leste is equal to 26.4 percent.

**Table C: Timor-Leste’s IHDI for 2017 relative to selected groups**

	IHDI value	Overall loss (%)	Human inequality coefficient (%)	Inequality in life expectancy at birth (%)	Inequality in education (%)	Inequality in income (%)
<b>Timor-Leste</b>	0.452	27.7	26.4	20.6	44.9	13.6
<b>East Asia and the Pacific</b>	0.619	15.6	15.4	10.0	13.1	23.1
<b>Medium HDI</b>	0.483	25.1	24.9	20.3	33.1	21.2

### **Gender Development Index (GDI)**

In the 2014 HDR, HDRO introduced a new measure, the GDI, based on the sex-disaggregated Human Development Index, defined as a ratio of the female to the male HDI. The GDI measures gender inequalities in achievement in three basic dimensions of human development: health (measured by female and male life expectancy at birth), education (measured by female and male expected years of schooling for children and mean years for adults aged 25 years and older); and command over economic resources (measured by female and male estimated GNI per capita). For details on how the index is constructed refer to [Technical Note 3](#). Country groups are based on absolute deviation from gender parity in HDI. This means that the grouping takes into consideration inequality in favour of men or women equally.

The GDI is calculated for 164 countries. The 2017 female HDI value for Timor-Leste is 0.567 in contrast with 0.663 for males, resulting in a GDI value of 0.855, placing it into Group 5 (see Table D).

**Table D: Timor-Leste’s GDI for 2017 relative to selected groups**

	Life expectancy at birth		Expected years of schooling		Mean years of schooling		GNI per capita		HDI values		F-M ratio
	Female	Male	Female	Male	Female	Male	Female	Male	Female	Male	GDI value
<b>Timor-Leste</b>	71.1	67.4	12.3	13.2	3.6	5.3	3,301	10,282	0.567	0.663	0.855
<b>East Asia and the Pacific</b>	76.7	72.8	13.5	13.2	7.6	8.3	10,689	16,568	0.717	0.750	0.957
<b>Medium HDI</b>	71.1	67.2	12.2	11.8	5.6	7.9	3,673	9,906	0.598	0.680	0.878

### **Gender Inequality Index (GII)**

The 2010 HDR introduced the GII, which reflects gender-based inequalities in three dimensions – reproductive health, empowerment, and economic activity. Reproductive health is measured by maternal mortality and adolescent birth rates; empowerment is measured by the share of parliamentary seats held by women and attainment in secondary and higher education by each gender; and economic activity is measured by the labour market participation rate for women and men. The GII can be interpreted as the loss in human development due to inequality between female and male achievements in the three GII dimensions. For more details on GII please see [Technical Note 4](#). Due to a lack of relevant data, the GII has not been calculated for this country.

## Dashboards 1-5

Countries are grouped partially by their performance in each indicator into three groups of approximately equal size (terciles), thus, there is the top third, the middle third and the bottom third. The intention is not to suggest the thresholds or target values for these indicators but to allow a crude assessment of country's performance relative to others. Three-colour coding visualizes a partial grouping of countries by indicator. It can be seen as a simple visualization tool as it helps the users to immediately picture the country's performance. A country that is in the top group performs better than at least two thirds of countries (i.e., it is among the top third performers); a country that is in the middle group performs better than at least one third but worse than at least one third (i.e., it is among the medium third performers); and a country that is in the bottom third performs worse than at least two thirds of countries (i.e., it is among the bottom third performers). Three-color coding visualizes a partial grouping of countries by indicator. More details about partial grouping in this table are given in [Technical note 6](#).

### Dashboard 1: Quality of human development

This dashboard contains a selection of 13 indicators associated with the quality of health, education and standard of living. The indicators on quality of health are lost health expectancy, number of physicians, and number of hospital beds. The indicators on quality of education are pupil-teacher ratio in primary schools; primary school teachers trained to teach; proportion of schools with access to the internet; and the Programme for International Student Assessment (PISA) scores in mathematics, reading and science. The indicators on quality of standard of living are the proportion of employed people engaged in vulnerable employment, the proportion of rural population with access to electricity, the proportion of population using improved drinking water sources and proportion of population using improved sanitation facilities.

A country that is in the top third group on all indicators can be considered a country with the highest quality of human development. The dashboard shows that not all countries in the very high human development group have the highest quality of human development and that many countries in the low human development group are in the bottom third of all quality indicators in the table.

Table F provides the number of indicators in which Timor-Leste performs: better than at least two thirds of countries (i.e., it is among the top third performers); better than at least one third but worse than at least one third (i.e., it is among the medium third performers); and worse than at least two thirds of countries (i.e., it is among the bottom third performers). Figures for Fiji and Solomon Islands are also shown in the table for comparison.

**Table F: Summary of Timor-Leste's performance on the Quality of human development indicators relative to selected countries**

	Quality of health (3 indicators)			Quality of education (6 indicators)			Quality of standard of living (4 indicators)			Overall (13 indicators)			Missing indicators
	Top third	Middle third	Bottom third	Top third	Middle third	Bottom third	Top third	Middle third	Bottom third	Top third	Middle third	Bottom third	
	Number of indicators												
<b>Timor-Leste</b>	1	0	2	0	0	0	0	0	4	1	0	6	6
<b>Fiji</b>	0	2	1	1	0	1	1	3	0	2	5	2	4
<b>Solomon Islands</b>	0	0	3	0	1	1	0	0	4	0	1	8	4

## Dashboard 2: Life-course gender gap

This dashboard contains a selection of 12 key indicators that display gender gaps in choices and opportunities over the life course – childhood and youth, adulthood and older age. The indicators refer to education, labour market and work, political representation, time use and social protection. Three indicators are presented only for women and the rest are given in the form of female-to-male ratio. Countries are grouped partially by their performance in each indicator into three groups of approximately equal size (terciles). Sex ratio at birth is an exception - countries are grouped into two groups: the natural group (countries with a value of 1.04-1.07, inclusive) and the gender-biased group (countries with all other values). Deviations from the natural sex ratio at birth have implications for population replacement levels, suggest possible future social and economic problems and may indicate gender bias.

Table G provides the number of indicators in which Timor-Leste performs: better than at least two thirds of countries (i.e., it is among the top third performers), better than at least one third but worse than at least one third (i.e., it is among the medium third performers), and worse than at least two thirds of countries (i.e., it is among the bottom third performers). Figures for Fiji and Solomon Islands are also shown in the table for comparison.

**Table G: Summary of Timor-Leste's performance on the Life-course gender gap dashboard relative to selected countries**

	Childhood and youth (5 indicators)			Adulthood (6 indicators)			Older age (1 indicator)			Overall (12 indicators)			Missing indicators
	Top third	Middle third	Bottom third	Top third	Middle third	Bottom third	Top third	Middle third	Bottom third	Top third	Middle third	Bottom third	
	Number of indicators												
<b>Timor-Leste</b>	2	2	1	1	0	2	0	1	0	3	3	3	3
<b>Fiji</b>	2	0	2	0	4	2	0	0	0	2	4	4	2
<b>Solomon Islands</b>	2	3	0	1	1	1	0	0	0	3	4	1	4

## Dashboard 3: Women's empowerment

This dashboard contains a selection of 13 woman-specific empowerment indicators that allows empowerment to be compared across three dimensions – reproductive health and family planning, violence against girls and women and socioeconomic empowerment. Three-color coding visualizes a partial grouping of countries by indicator. Most countries have at least one indicator in each tercile, which implies that women's empowerment is unequal across indicators and countries.

Table H provides the number of indicators in which Timor-Leste performs: better than at least two thirds of countries (i.e., it is among the top third performers), better than at least one third but worse than at least one third (i.e., it is among the medium third performers), and worse than at least two thirds of countries (i.e., it is among the bottom third performers). Figures for Fiji and Solomon Islands are also shown in the table for comparison.

**Table H: Summary of Timor-Leste's performance on the Women's empowerment dashboard relative to selected countries**

	Reproductive health and family planning (6 indicators)			Violence against girls and women (3 indicators)			Socioeconomic empowerment (4 indicators)			Overall (13 indicators)			Missing indicators
	Top third	Middle third	Bottom third	Top third	Middle third	Bottom third	Top third	Middle third	Bottom third	Top third	Middle third	Bottom third	
	Number of indicators												
<b>Timor-Leste</b>	0	1	5	0	1	2	0	0	1	0	2	8	3
<b>Fiji</b>	2	2	0	0	0	2	1	0	1	3	2	3	5
<b>Solomon Islands</b>	0	2	4	0	1	2	0	0	1	0	3	7	3

#### Dashboard 4: Environmental sustainability

This dashboard contains a selection of 9 indicators that cover environmental sustainability and environmental threats. The environmental sustainability indicators present levels of or changes in energy consumption, carbon-dioxide emissions, change in forest area and fresh water withdrawals. The environmental threats indicators are mortality rates attributed to household and ambient air pollution and to unsafe water, sanitation and hygiene services, and the International Union for Conservation of Nature Red List Index value, which measures change in aggregate extinction risk across groups of species. The percentage of total land area under forest is not coloured because it is meant to provide context for the indicator on change in forest area.

Table I provides the number of indicators in which Timor-Leste performs: better than at least two thirds of countries (i.e., it is among the top third performers), better than at least one third but worse than at least one third (i.e., it is among the medium third performers), and worse than at least two thirds of countries (i.e., it is among the bottom third performers). Figures for Fiji and Solomon Islands are also shown in the table for comparison.

**Table I: Summary of Timor-Leste's performance on the Environmental Sustainability dashboard relative to selected countries**

	Environmental sustainability (6 indicators)			Environmental threats (3 indicators)			Overall (9 indicators)			Missing indicators
	Top third	Middle third	Bottom third	Top third	Middle third	Bottom third	Top third	Middle third	Bottom third	
	Number of indicators									
<b>Timor-Leste</b>	2	1	1	0	1	2	2	2	3	2
<b>Fiji</b>	1	3	0	0	2	1	1	5	1	2
<b>Solomon Islands</b>	2	1	1	0	0	3	2	1	4	2

## Dashboard 5: Socioeconomic sustainability

This dashboard contains a selection of 10 indicators that cover economic and social sustainability. The economic sustainability indicators are adjusted net savings, total debt service, gross capital formation, skilled labour force, diversity of exports and expenditure on research and development. The social sustainability indicators are the ratio of the sum of education and health expenditure to military expenditure, changes in inequality of HDI distribution, and changes in gender and income inequality. Military expenditure is not coloured because it is meant to provide context for the indicator on education and health expenditure and it is not directly considered as an indicator of socioeconomic sustainability.

Table J provides the number of indicators in which Timor-Leste performs: better than at least two thirds of countries (i.e., it is among the top third performers), better than at least one third but worse than at least one third (i.e., it is among the medium third performers), and worse than at least two thirds of countries (i.e., it is among the bottom third performers). Figures for Fiji and Solomon Islands are also shown in the table for comparison.

**Table J: Summary of Timor-Leste's performance on the Socioeconomic sustainability dashboard relative to selected countries**

	Economic sustainability (6 indicators)			Social sustainability (4 indicators)			Overall (10 indicators)			Missing indicators
	Top third	Middle third	Bottom third	Top third	Middle third	Bottom third	Top third	Middle third	Bottom third	
	Number of indicators									
<b>Timor-Leste</b>	1	0	3	2	0	0	3	0	3	4
<b>Fiji</b>	1	4	0	1	1	1	2	5	1	2
<b>Solomon Islands</b>	1	0	3	1	0	0	2	0	3	5