

exploration & production



TIMOR LESTE DRILLING

Project Consultation
23 February 2010

eni

Purpose

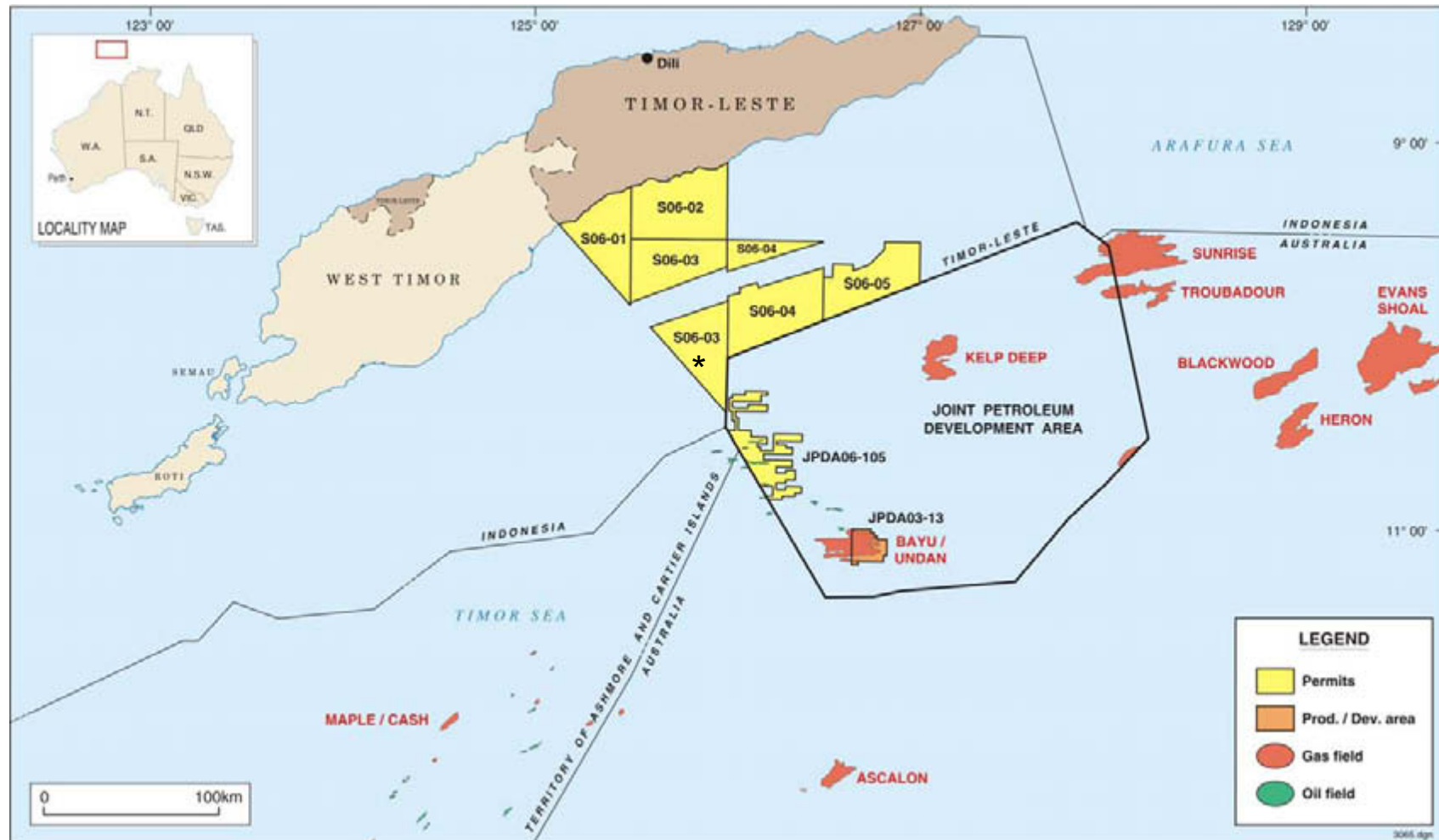
- To provide information about planned drilling activity
- Discuss Potential Environmental Risks and mitigation strategies
- Provide Eni contact details for further information



eni

exploration & production

Location



eni

exploration & production

Cova Details

- Start date: July 2010
- Drill Rig: Saipem 10,000
- Duration of drilling campaign: 45 days
- Water Depth: 1930m
- Target Depth: 4204m
- Support vessels
- Water Based Drilling Muds
- Drill cuttings discharged at sea bed and from rig



eni

exploration & production

Well Schematic : **Cova** Vertical Exploration Well (Wildcat)

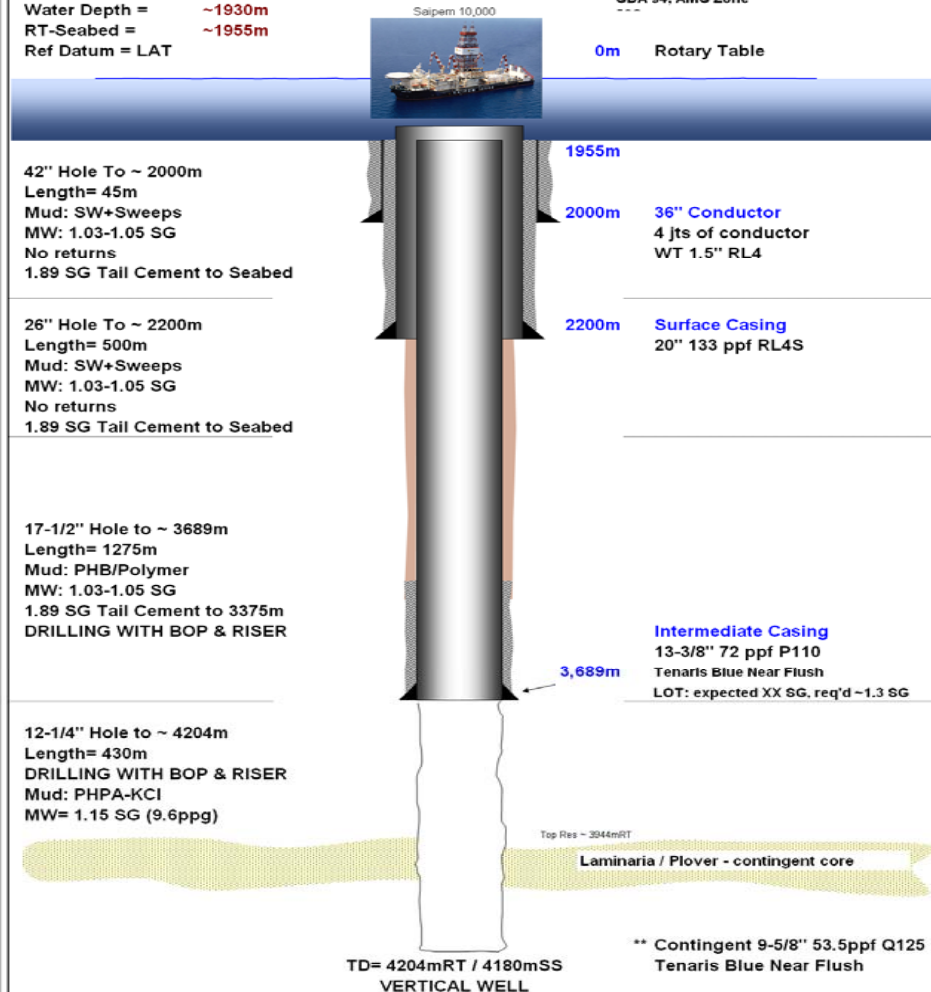


Preliminary

Hole Sizes, Casing, Mud, Cement
All depths in mRT MD

RT- MSL= 25m est
Water Depth = ~1930m
RT-Seabed = ~1955m
Ref Datum = LAT

PSC S06-03
X= 145,464 mE
Y= 8,889,181 mN
GDA 94, AMG Zone



exploration & production



eni

SAIPEM 10,000

- Built 2000
- Ultra deep water Drillship
- Dimensions
 - Length – 227.6m
 - Breadth – 42m
 - Height – 19m
- Accommodation - 172 People
- Dynamic Position Fixing



eni

exploration & production

Primary Support Vessels

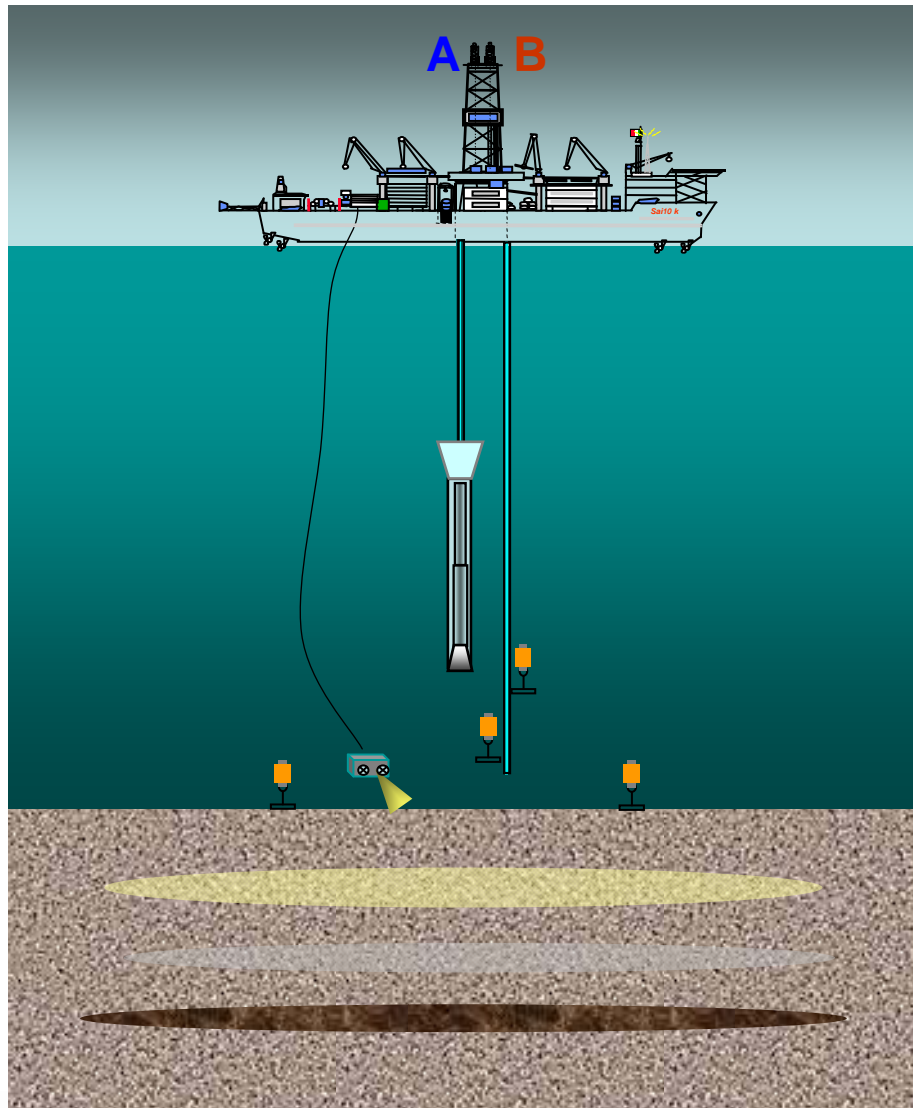
- Transport consumables, fuel and drilling tool
- Operate from Darwin Port
- 1 vessel will be with the Saipem 10000 at all times during drilling
- Sea Witch
 - Contractor: Deep Sea Supply
 - Current Contract: Eni Indonesia
 - Maximum Speed
 - Cargo: 1600t



eni

exploration & production

DUAL ACTIVITY RIG – RISERLESS PHASE



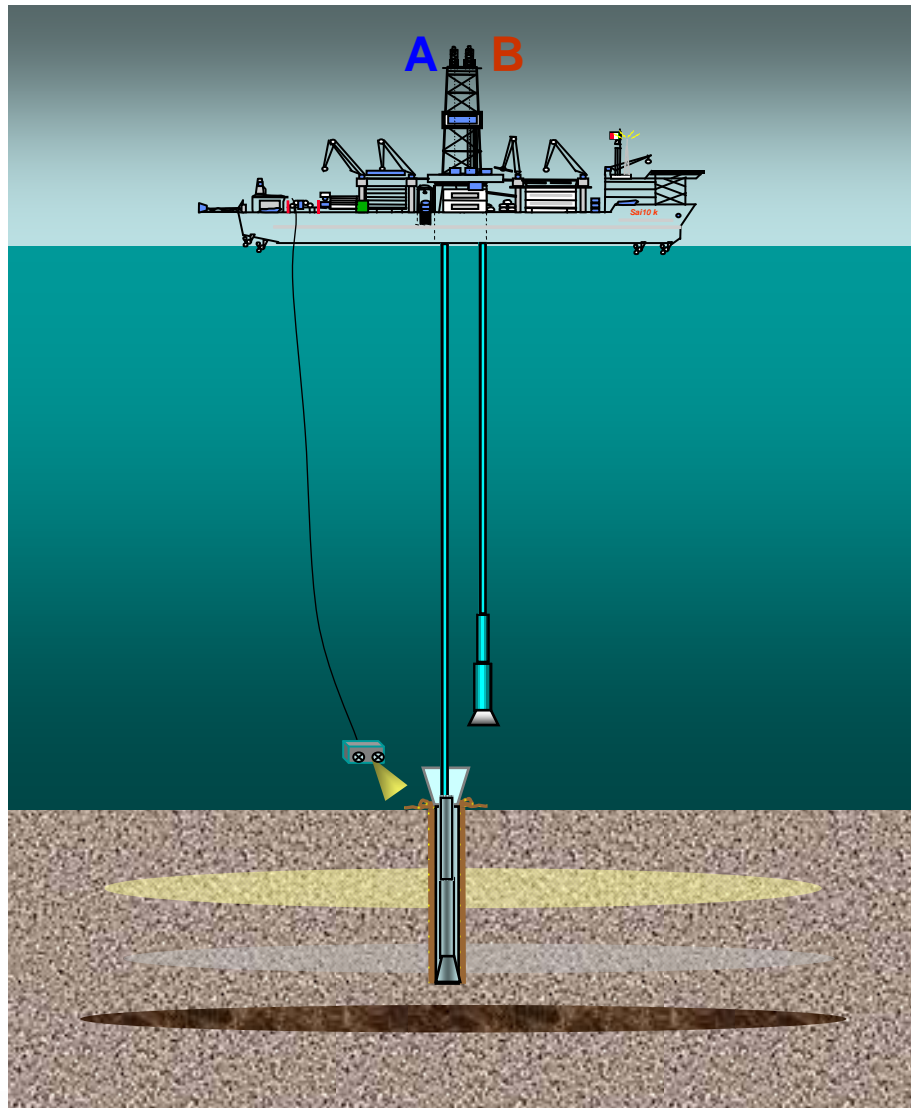
- **Rig A:**
Drill 42" hole and Run 36" Conductor
- **Rig B:**
Deploying Beacons



eni

exploration & production

DUAL ACTIVITY RIG – RISERLESS PHASE



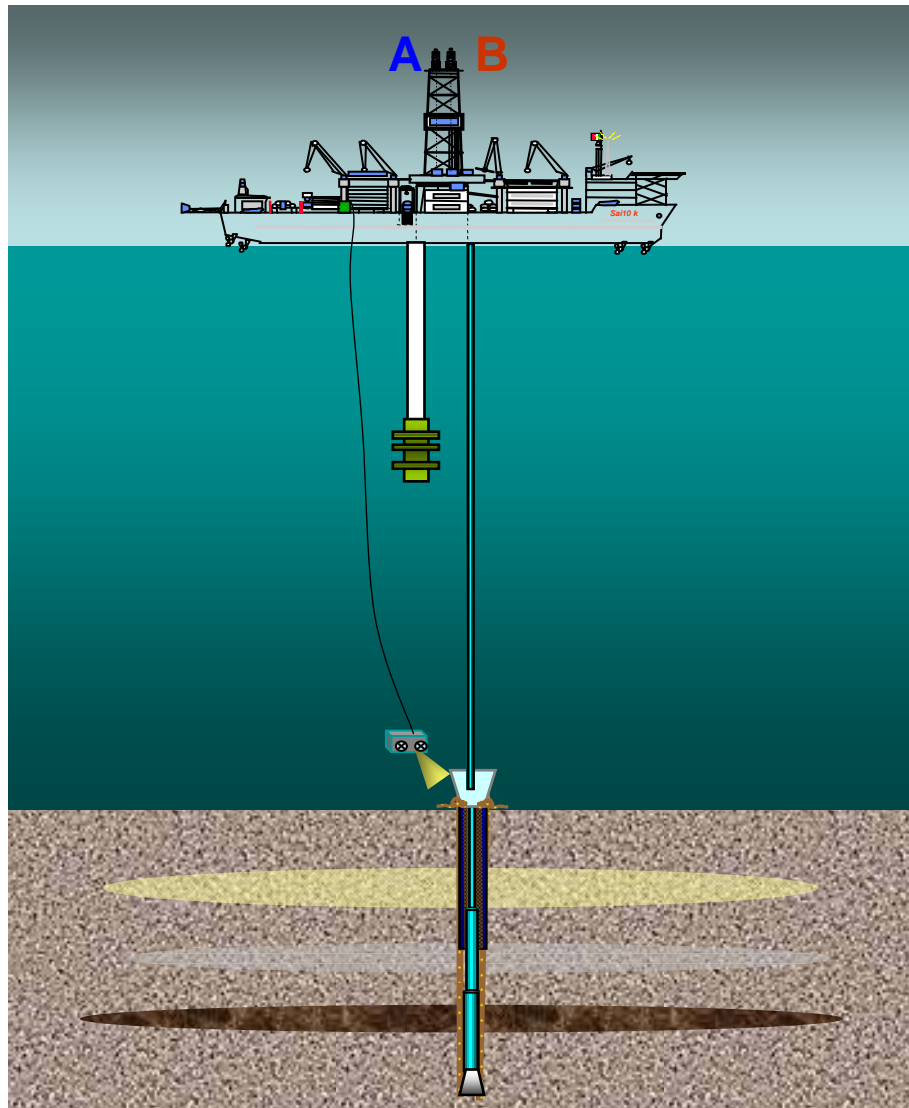
- **Rig A:**
**Cementing 36”
Conductor**
- **Rig B:**
Running 26” BHA



eni

exploration & production

DUAL ACTIVITY RIG – RISERLESS PHASE



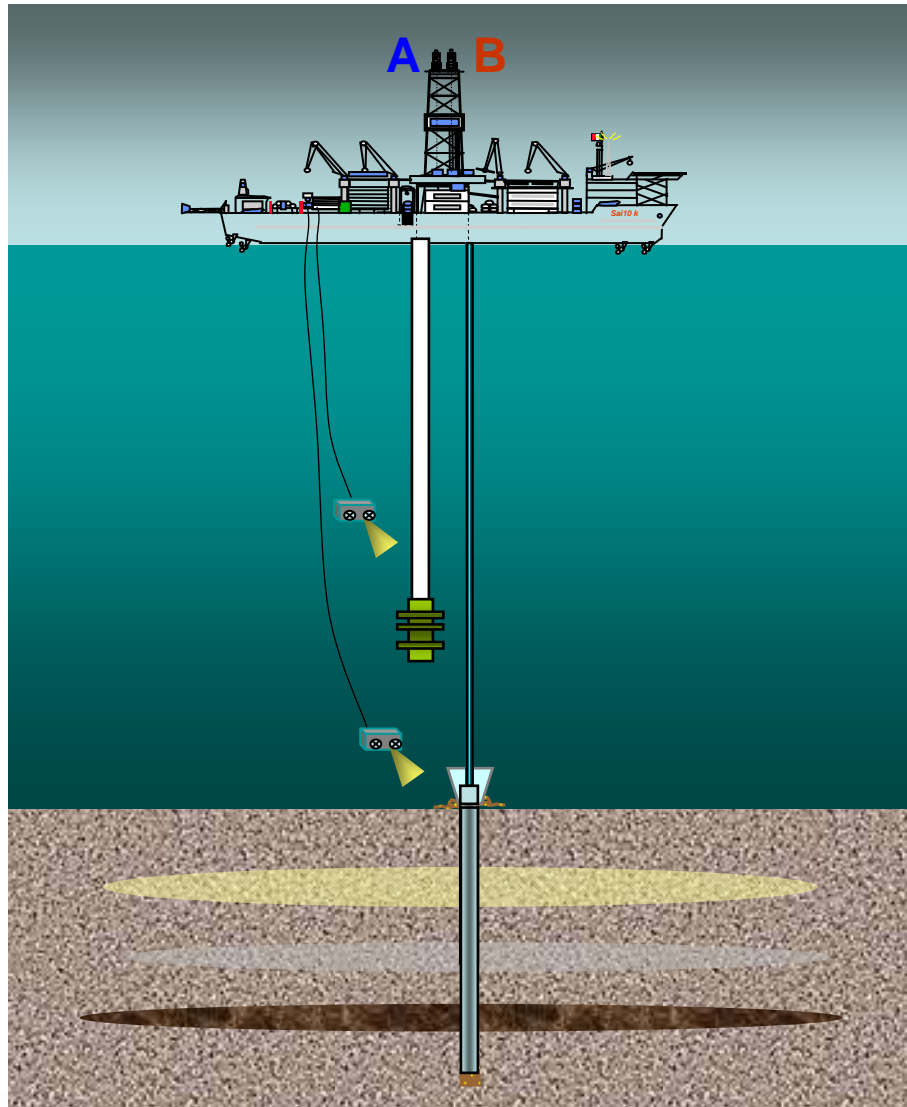
- **Rig A:**
Running BOP
- **Rig B:**
Drilling 26" Hole



eni

exploration & production

DUAL ACTIVITY RIG – RISERLESS PHASE



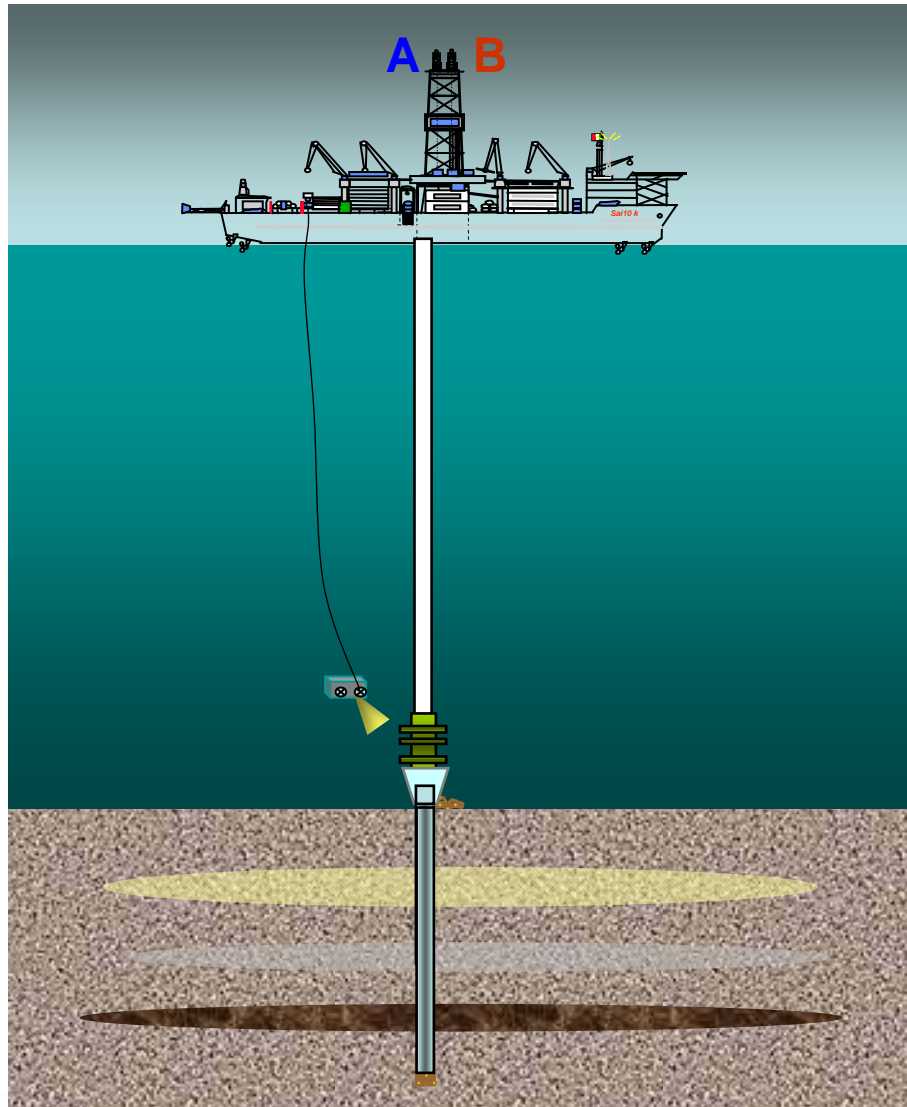
- **Rig A:**
Running BOP
- **Rig B:**
Run & Cement
20" Casing



eni

exploration & production

DUAL ACTIVITY RIG – CONNECTED PHASE



- **Rig A:**
BOP latched on wellhead
 - 17-1/2" hole section
 - 12-1/4" hole section
- **Rig B:**
No direct activity on the well

After latching the BOP, the rig operates like a single activity rig with off-line capability.
exploration & production



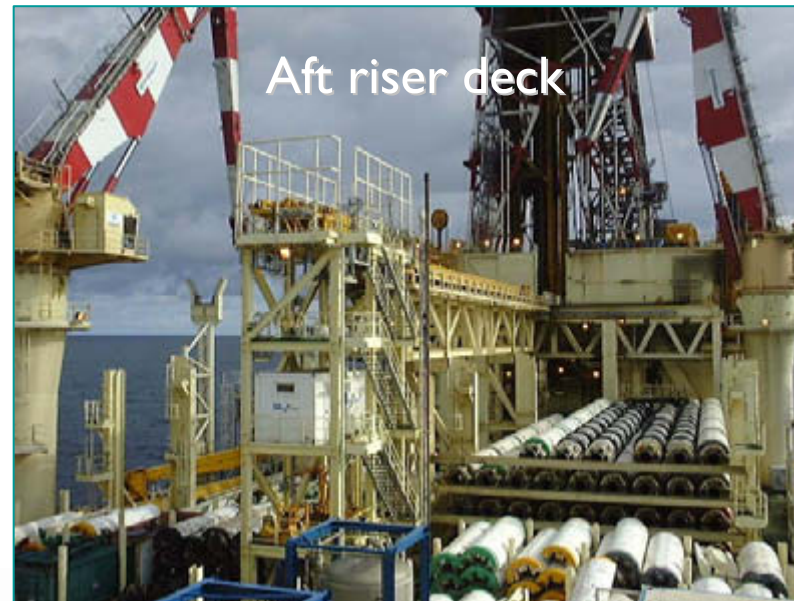
eni



Fwd main pipe deck



Aft secondary pipe deck



Aft riser deck

exploration & production

Dual Derrick Side View



Dual Derrick Front View

exploration & production

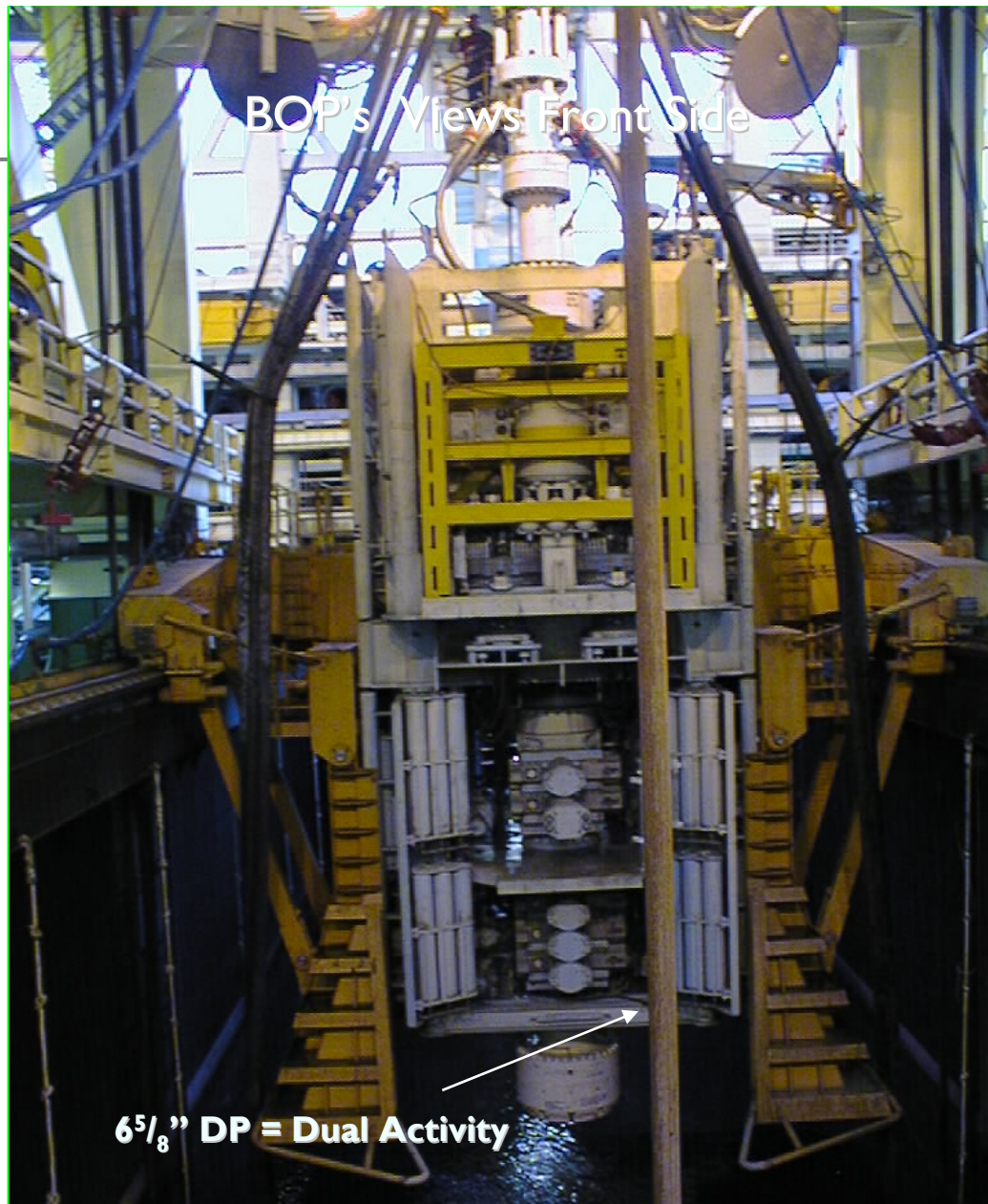


Finger Boards - Derrick Racking System Views
exploration & production



Automatic Derrick Man Views
exploration & production

BOP's Views Front Side



$6\frac{5}{8}$ " DP = Dual Activity



eni

exploration & production

Remotely Operated Vehicle

Aft Starboard ROV



Aft Port ROV



exploration & production

Existing Environment

- Deep water environment
- Marine fauna includes:
 - Whales;
 - Dolphins
 - Turtles
 - Birds
 - fish
 - other species
- Several of these species are protected by international treaties or legislation.

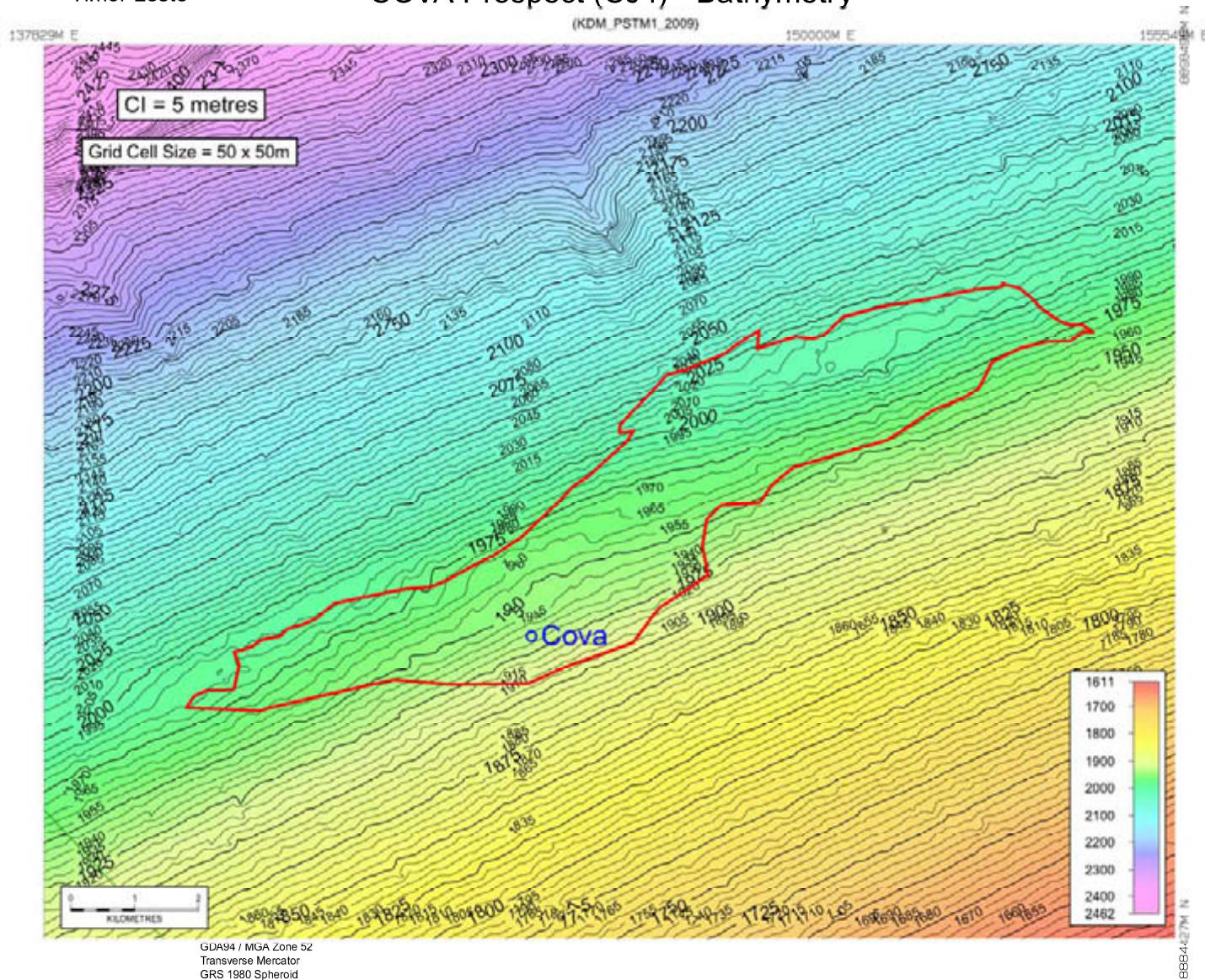


eni

exploration & production

Timor-Leste

COVA Prospect (CJ4) - Bathymetry



tion



eni

Existing Environment: Marine Mammals



Bryde's Whale



Sperm Whale



Blue Whale



Dolphin species



Humpback Whale



Killer Whale
exploration & production



eni

Emissions and Discharges

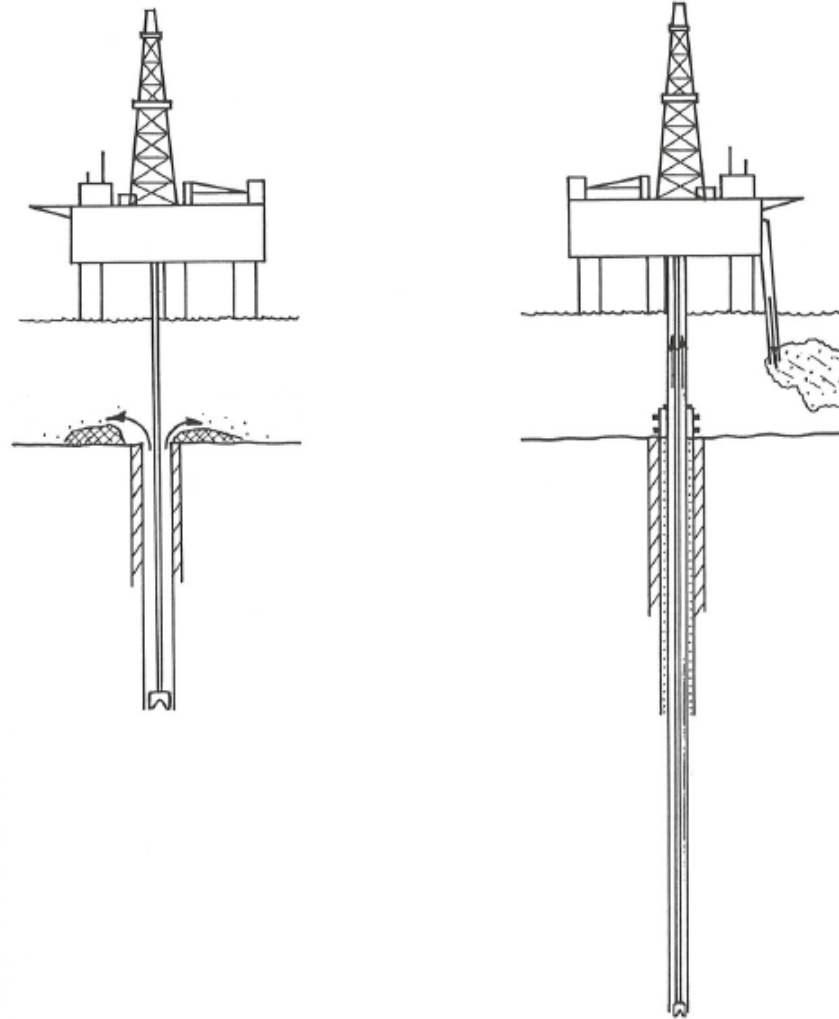
- Drilling discharges:
 - Drilling fluids
 - Cuttings
- Atmospheric emissions
- Cooling water
- Desalination brine
- Sewage
- Domestic waste water
- Putrescible wastes



eni

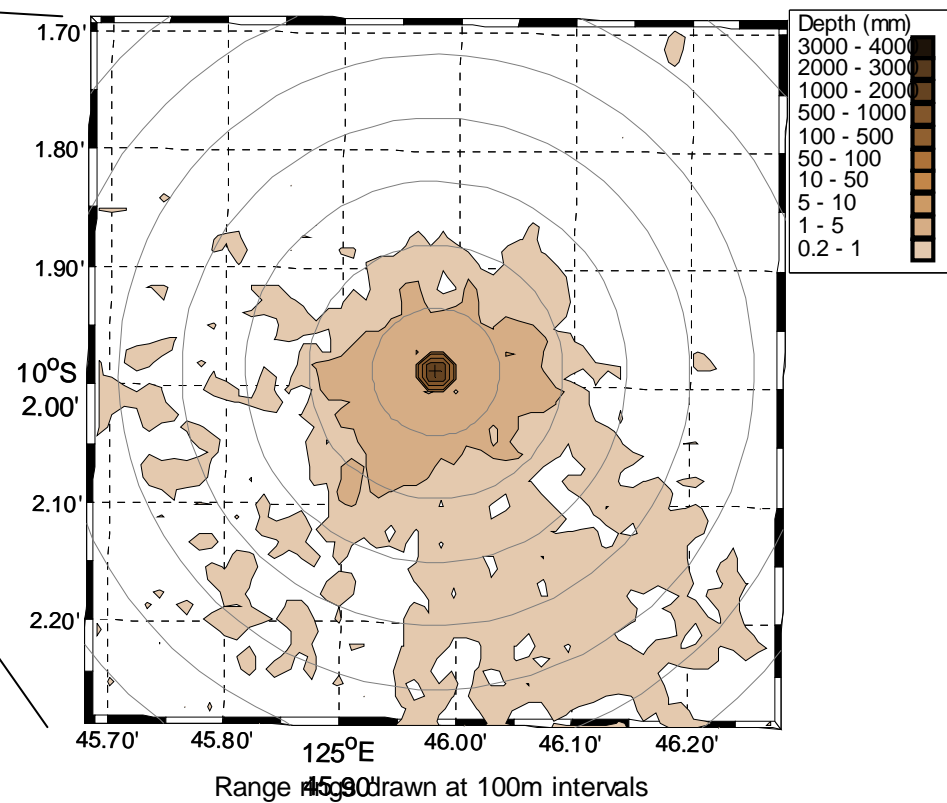
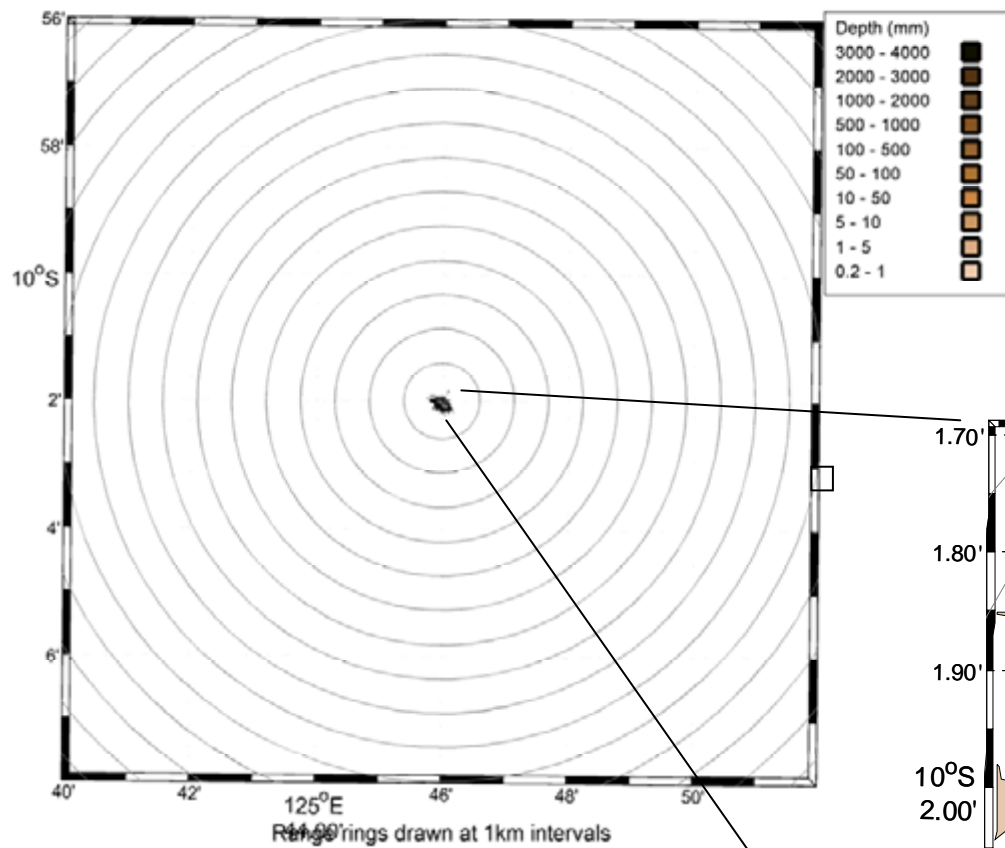
exploration & production

Drill Cuttings Discharge



eni

exploration & production



eni

exploration & production

Other Environmental Hazards

- Accidental hydrocarbon discharges
 - Well blowout
 - Vessel Collision
 - Fuel or chemical Transfer
- Solid and hazardous wastes
- Marine pests
- Physical disturbance to marine biota



eni

exploration & production

Further Information

Documents submitted

- Draft Framework of Reference

Documentation to be submitted to DNMA

- Environmental Impact Statement
- Environmental Management Plan
- Environmental Monitoring Plan
- Oil Spill Contingency Plan

Eni Timor Leste:

- Tony Heynen, Country Representative
 - Tel: +670 331 0847
 - Email: tony.heynen@eniaustralia.com.au



eni

exploration & production