



MINISTÉRIO DO
PETRÓLEO
E RECURSOS MINERAIS

TIMOR GAP, E.P.
TIMOR GÁS & PETRÓLEO

Ministério do Petróleo e Recursos Minerais Ministry of Petroleum and Mineral Resources

UPDATE 2012

National Conference, Dili Convention Center, 13 November 2012

Scanned, reformatted and copy-edited (at TimorGAP's request) by La'o Hamutuk from photocopies of PowerPoint presentation given at the nationally televised conference. Notes in red italics added by La'o Hamutuk.

TIMOR GAP, E.P. Exploration and Production and Supply Base Unit Presentation by Vicente Lacerda

2012 SUMMARY WORK PROGRAMS

- ❑ Exploration & Production Program
 - JPDA 11–106 Project (*Jahal Kuda Tasi, new Joint Venture established*)
 - Elang-Kakatua/Kakatua North re-Study (*planning to do this with third party*)
 - Setting-up Geology & Geophysics Team Rules & Work Program
- ❑ Suai Supply Base (SSB) Project
 - SSB Land Title Clearance (*called "libertasaun" in Tetum*)
 - Review of Breakwater Design Model
 - Breakwater Quarry Survey
 - Engagement of Consultant for construction supervision
 - Bidding Round for Design-build Contractor
 - Construction of the project

■ SUAI SUPPLY BASE PROJECT (SSB)



- Technical & Commercial Viable, Front End Engineering Design (FEED)
- CoM approved the SSB Project

papel gerasaun foun iha setor petróleo no minerais Timor Leste



TL-EITI



[Image deleted at the request of TimorGap]

- Preparation for construction
 - **Land Title Clearance Activities**
 - ✓ *Socialization & consultation done*
 - ✓ *Land title identification done*
 - ✓ *Data verification/publication done*
 - Define mode of compensation – ongoing
 - Consultation of mode of compensation next
 - Payment of compensation
- **Engagement of Consultant for project supervision**
- Breakwater quarry survey
- Bidding round for contractor
- Construction of the project

Consultation & Socialization Program

- Date 3-7 October 2011
 - *Covalima District Meeting venue*
 - *Camanasa Village Community Center*
 - *Matai Village Community Center*
 - *Belacasak Village Community Center*
 - *Holbelis-Labarai Village Community Center*
- Disseminate of the project to community
- Consultation with community
- Gathering ideas, listen to the communities' comments/inputs and recommendations
- Define strategy plan for land identification program

Land Identification Program

Data to be Identified

- Land & properties -----MJ – DNTP (Justice/Land & Property)
- Forestry (trees planted that have economic value) -----MAP (Agriculture & Fisheries)
- Plantation-----MAP
- Agriculture (Fruticulture; Horticulture & Food) -----MAP
- Livestock-----MAP
- Fishery & traditional salt production places-----MAP
- Environment & Culture -----SEMA (Environment)
- Identify/witness for land & plant owner, etc. -----Local, Authority, traditional leaders & Veterans

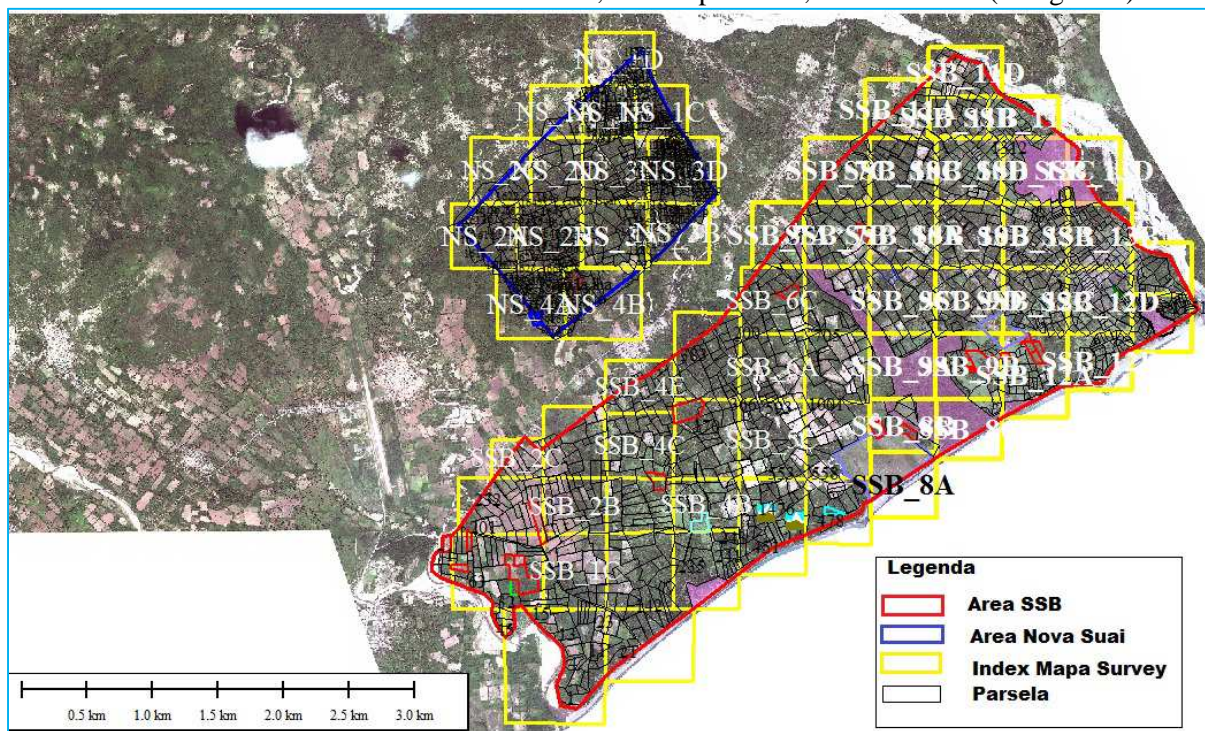
Identification Team

- 5 Teams
- One team consists of SERN, DNTP, MAP, PNTL, Local Authority, Traditional leaders & Veterans
- Each member of the team carries out their respective roles and duties.

Summary Results of Identification

- Started on 25 October 2011 — 14 January 2012
- Total collection area: SSB=1,113 ha, Nova Suai=213 ha
- Plots data (land & plant owner): 1,753
 - *Forestry: Teak=68,069 trees, Gamelina=1,690 trees, Mahogany=86 trees, Sandalwood=436 trees*
 - *Plantation: Coconut=4,454 trees, Candleberry=1,106 trees, Cocoa=16 trees, Bua=1908 trees*
 - *Fruticulture: Banana=4,961, Mango=795 trees, etc.*
 - *Food & Horticulture: Corn, paddy, cassava, etc.*
- Livestock Data (livestock owner): 333
 - *buffalos=2,707, horses=37, pigs=745, goats=124*

- Fishery data (boat owner): 52
 - Fiberglass boat=1, Boat=59, total Fishermen=330
- Traditional Salt Production places: 27
 - Total community members involved in salt production=149
- Environmental data: Protected Area =81.4 ha, Sacred places=3, Cemeteries=4 (800 graves) etc.



Verification/Publication Data Program

- Date 15 – 30 May 2012, at:
 - ✓ Camanasa Village Community Centre
 - ✓ Belacasak Village Community Centre
 - ✓ Holbelis-Labarai Village Community Centre
- Publicly Identify data
- Crosscheck data
- Record and respond to complaints
- Facilitate dispute mediation
- Verify and re-verify data for errors
- Materials to publish
 - ✓ Data sheet: 1,849 pages
 - ✓ Maps: 18 maps

Summary Result of Verification/Publication

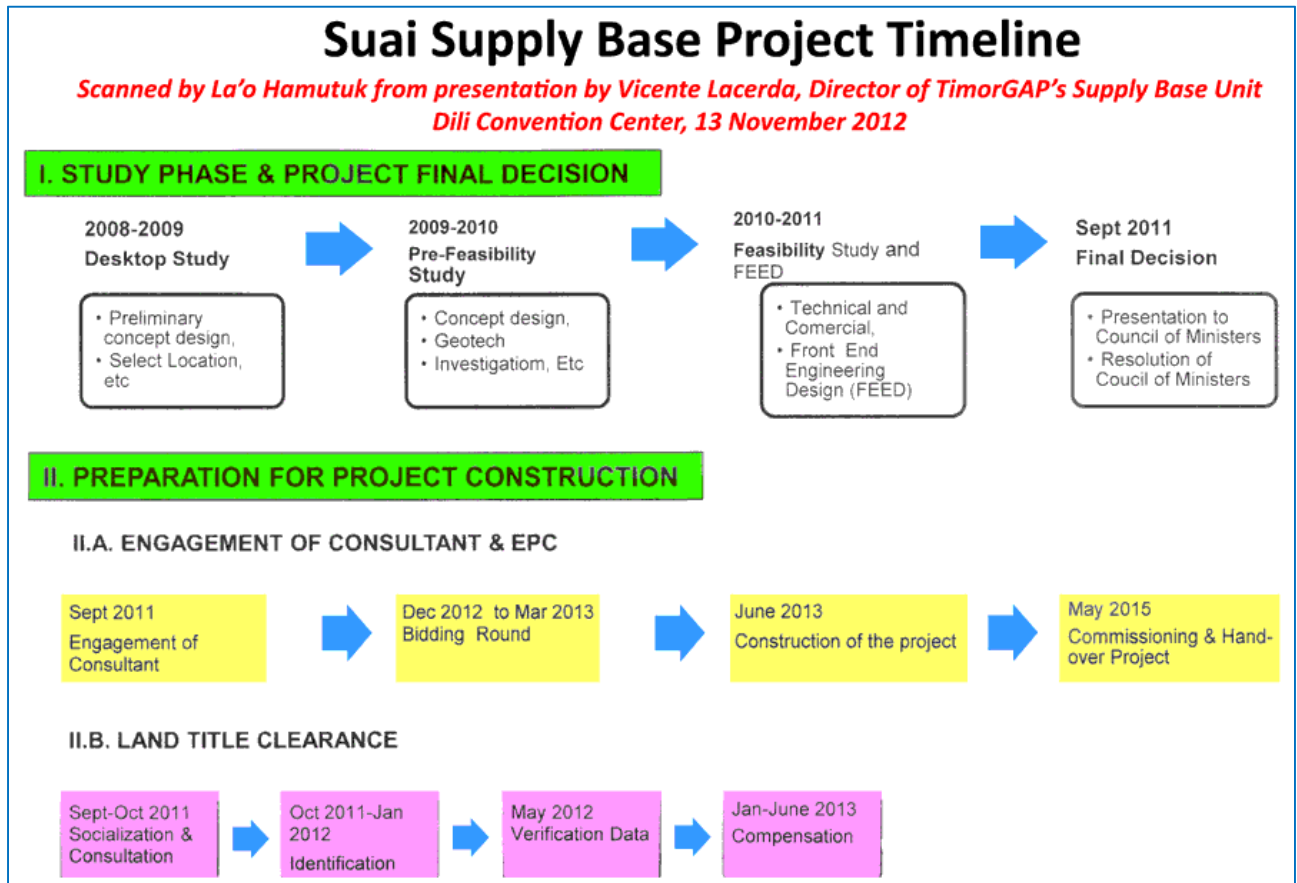
Plots Data (land & plant owner)				
Public Data	Signed Data	New Data	Percentage Signed	Verified Data
1,753	1,620	92	93	1,845

Livestock Data (Livestock owner)				
Public Data	Signed Data	New Data	Percentage Signed	Verified Data
333	331	14	99	347

Fishery Data (boat owner)				
Public Data	Signed Data	New Data	Percentage Signed	Verified Data
52	50	0	96	52

Environmental Data				
Sacred Place	Protected Area	Cemetery	Reserved Area	Protected plant & animals
3	2	4	7	banyan tree, Crocodile, parrot, etc,

There were no complaints or objections from community people regarding environmental data during the period of data publication



Comment from La'o Hamutuk: When the Council of Ministers approved the project with Resolution No 26/2011 of 14 September, they believed that Phase I – Construction of fixed assets would cost \$274-\$347 million.

Less than two years later, the proposed 2013 State Budget allocates more than double that amount – \$719 million – without including Suai Airport or any expenditures after 2017.