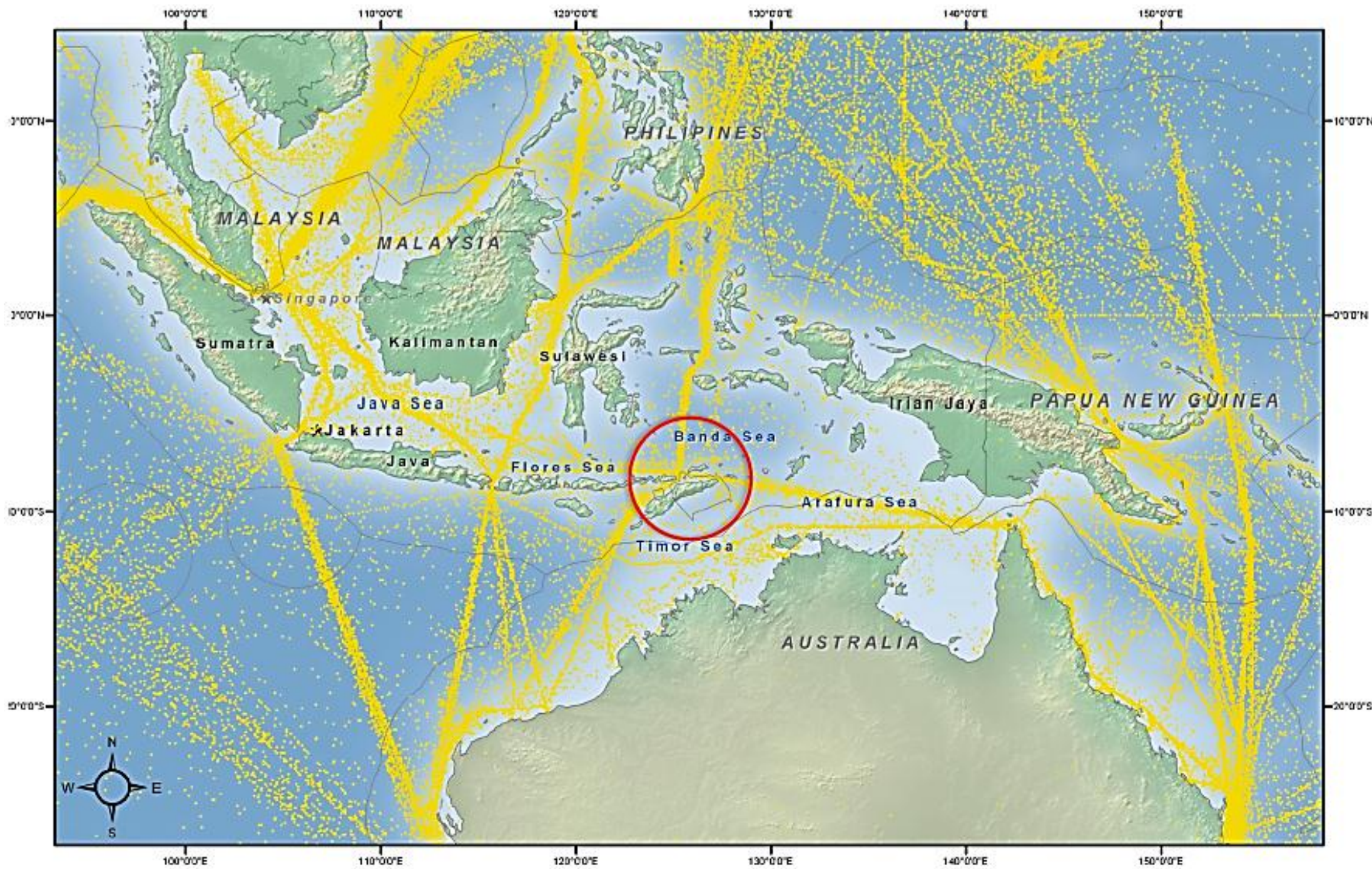


A New Port in Tibar Bay



What: A modern international two berth (630m) cargo and container terminal.
Capacity: 350.000 TEU, the expected volume of trade in 2040.

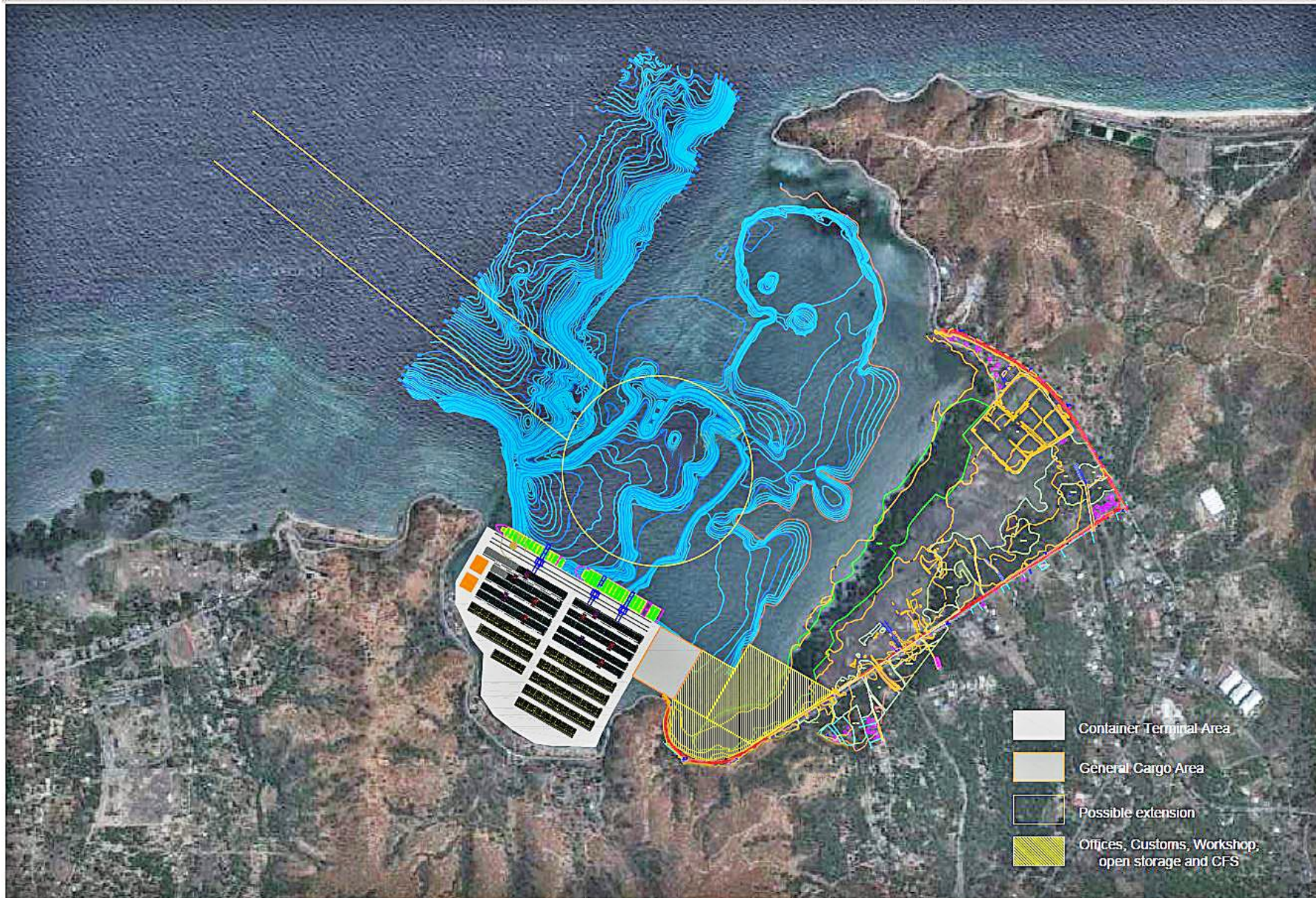
Where: On the western side of Tibar Bay, minimizing costs and environmental and social impacts.

Why: Economic and population growth will drive cargo growth from around 45,000 TEU (2012) to over 350,000 TEU by 2040. The current port in Dili harbor is expected to have reached its limit in 2018, resulting in congestion, delays and high costs. The Dili harbor port will still be used for passenger traffic. (TEU is twenty-foot equivalent unit, or a 20 foot container.)

Who: The Government of Timor-Leste in a Public Private Partnership (PPP) with an international port operator selected in competitive international public tender.
The concession will be a Build Operate Transfer (BOT) for 30 years.
Estimated total cost: 300-400 million USD over a period of several years to be shared between the Government of Timor-Leste and the port operator. The Government will receive royalties, taxes and fees.

When: Invitation for Prequalification October 2013
Announcement of Prequalified bidders February 2014
Bid Submission Deadline Estimated April 2014
Execution of Project Agreement Estimated May 2014
Estimated construction period 2015-2016
Estimated start of port operation 2016 - 2017

Tibar Bay Port Site



26.9 ha Container Terminal, 2.7 ha General Cargo, 11.6 ha Offices, Workshop

Tibar Bay Social Features

