



REPÚBLICA DEMOCRÁTICA DE TIMOR-LESTE  
Ministério das Finanças  
DIRECÇÃO-GERAL DE ANÁLISE E PESQUISA  
DIRECÇÃO NACIONAL DE ESTATÍSTICA  
“Adeus Conflito, Bemvindo Desenvolvimento”



EXTERNAL TRADE STATISTICS

ANNUAL REPORTS 2011



Direcção Nacional de Estatística

[www.dne.mof.gov.tl](http://www.dne.mof.gov.tl)

Rua de Caicoli

Apartadu 10/PO.BOX 10

## ***Preface***

---

We are pleased to present *External Trade Statistics 2011*, the seventh official publication of annual Trade Statistics for Timor-Leste. The statistics contained in this report show the patterns of international trade relating to Timor-Leste during the 2011 calendar year. Additionally, the report provides comparative annual data for 2004, 2005, 2006, 2008, 2009, 2010 and when available for 2007.

This publication provides the trade statistics required for government, the donor community, NGOs, universities, research organizations and the private sector. This report is produced annually, along with the regular monthly Trade data releases that began in January 2004.

However, in 2007 the DIRECÇÃO NACIONAL DE ESTATÍSTICA was not able to publish the annual report, due to the lack of data for several months during that year.

In addition to this publication the DNE has now established a comprehensive Trade Statistics database. On request, this database can provide more detailed statistical data than is presented in this annual publication.

External Trade statistics are compiled from declarations made to the Timor-Leste Customs Service by importers and exporters, or their agents. We would therefore like to express our thanks for the cooperation of the Customs Service in providing the base data used to compile this publication.

We would like to extend our appreciation for the support provided by the Asian Development Bank during the initial years of Trade Statistics system implementation. Thanks are also extended to the offices of NZAID that has enabled further development of the Trade Statistics program.

This publication is the result of the work of a small team at DNE Trade Statistics Section, composed of Mr. Eduardo Martinho Ximenes and Ms. Nani Rolanda under the supervision of Mr. Rodolfo Soares.

We kindly advise users to read the concepts and definitions in the initial section of this report to fully understand the statistical data presented.

We would welcome any comments from users of this publication for improving the future Trade Statistics releases.

**Antonio Freitas, SE.M.M**

General Director of Analysis and Research

**Elias dos S. Ferreira**

Director DNE

## **Table of Contents**

---

<b>Introduction</b> .....	Page 4
<b>Concepts, Definitions and Explanations of Data</b> .....	Page 5
<b>Key Statistics</b> .....	Page 7
<b>Imports – Major Trading Partners (2011)</b> .....	Page 9
<b>Imports Tables</b> .....	Page 10
➤ Table 1: Trade Statistics Summary by Month – 2011	
➤ Table 2: Merchandise Imports by Chapter Heading (HS2).	
➤ Table 3: Merchandise Imports by Major Countries of Origin (2011).	
➤ Table 4: Merchandise Imports of Major Commodities by Country of Origin (2011).	
<b>Exports Tables</b> .....	Page 21
➤ Table 5: Exports by Major Trading Partners (2011).	
➤ Table 6: Re Exports by Country of Destination (2011).	
➤ Table 7: Coffee Exports by country of Destination (2011).	
➤ Table 8: Coffee Exports by Month, Quantity and Value.	
<b>Charts</b> .....	Page 26
➤ Chart 1: Merchandise Imports by Month – 2011.	
➤ Chart 2: Exports by Month – 2011.	
➤ Chart 3: Coffee Exports by Month – 2011.	
➤ Chart 4: Merchandise Import & Export by Year 2004-2011	
➤ Chart 5: Coffee exports by Year 2006-2011	

## *Introduction*

---

With the publication of this annual Trade Statistics report the DIRECÇÃO NACIONAL DE ESTATÍSTICA provides the latest available data on imports and exports for Timor-Leste during the 2011 calendar year.

As a “stand alone” indicator Trade statistics form a valuable source of information on the economic health of a country, as well as being used by a wide variety of planning and business organisations. Statistics on imports and exports form a valuable component of a country’s statement of economic transactions in the National Accounts and Balance of Payments. Accordingly, internationally comparable Trade Statistics that are accurate, detailed and timely have always been a statistical priority. Such information is vitally important for the planning and future development of Timor-Leste.

The information contained in this report aggregates the regular monthly releases of Trade Statistics issued by the Directorate during 2011. Additionally there are tables that aim to provide a more comprehensive picture of trading patterns than is possible from viewing a single month’s data. As the Trade Statistics database grows it is now possible to present comparative annual data.

The statistical methods and concepts used to compile data for this report closely follow the recommendations of UN publication “*International Merchandise Trade Statistics: Concepts and Definitions (IMTS, Rev.2)*” wherever possible. The objective of *External Trade Statistics, 2011* is to provide an aggregated view of import and export statistics for the 2011 calendar year, accepting the fact that more detailed analysis of specific commodities is available by contacting the DIRECÇÃO NACIONAL DE ESTATÍSTICA.

## Concepts, Definitions and Explanations of Data

---

The following section aims to provide additional information on the methods used to collect and analyse the Trade Statistics contained in this report. As already mentioned, these Trade Statistics are compiled using the UN “*International Merchandise Trade Statistics: Concepts and Definitions (IMTS, Rev.2)*” as a guide and quotations from that publication are included here.

<b>Source of Data</b>	<p>Data is obtained from import and export documents lodged with the Customs Service of Timor-Leste. This data is then processed by the National Statistics Directorate to produce External Trade Statistics that conform to United Nations statistical concepts.</p> <p>The ASYCUDA (Automated System for Customs Data) system became operational in the Timor-Leste Customs Service in October 2003. This system provides the basic data from which External Trade Statistics are prepared. Currently this system provides coverage of all imports and exports from the main airport and seaports plus parcel post. Some documentation from “small” ports is also processed at the Dili Customs Office, however it should be noted that approximately 4% of entries (those not lodged electronically via ASYCUDA), may not be included in the Trade Statistics.</p>
<b>Time of Recording</b>	<p>Import and Export Statistics are compiled by Date of Assessment. This is the date on which the duty to be paid (if any) is assessed by the Customs Service, in effect “clearing” the goods for import/export.</p>
<b>System of Recording</b>	<p>External Trade statistics are compiled in close accordance with the United Nations International Merchandise Trade Statistics Concepts and Definitions. The system is known as the “general” system of recording trade statistics as defined in UN statistical papers M52. Under this system imports includes all goods entering the economic territory of a compiling country and exports includes all goods leaving the economic territory of a compiling country. The “economic territory” includes bonded warehouses.</p>
<b>Merchandise Trade</b>	<p>Merchandise Trade is the import or export of goods that alter the nation’s stock of material resources as a result of their movement in or out of the country.</p>

<b>Non Merchandise Trade</b>	Goods which do not permanently add to the material resources of a country are identified as “Non Merchandise” trade. Some common examples would be temporary imports, returnable containers, goods in transit and goods consigned to foreign embassies within a host country.
<b>Country Statistics</b>	<p>Import statistics are available by “Country of Origin” - the country of manufacture of the goods.</p> <p>Export statistics are available by “Country of Destination” – the country of final destination as shown on the export declaration.</p>
<b>Commodity Classification</b>	Goods are classified by Customs using the Customs Tariff that is based on the international “Harmonized Commodity Description and Coding System”, or “HS” as it is sometimes called.
<b>Limitations of data</b>	<p>External Trade statistics are compiled from documents provided by exporters and importers to the Timor-Leste Customs Service. Considerable reliance is placed on the exporters/importers and their agents submitting correct codes and information. Before the data is released for statistical purposes it is validated and detected errors corrected however no warranty can be given that this information contains no errors.</p> <p>It should also be noted that goods crossing international borders without appropriate Customs documentation would not be included in Trade Statistics.</p>
<b>F.O.B. (Free on Board)</b>	Method of valuation for Exports. This valuation includes the cost of the goods plus their delivery on board ship ready for departure.
<b>C.I.F. (Cost, Insurance and Freight)</b>	Method of valuation for Imports. This valuation includes the cost of the goods, cost of insuring the goods during transportation and cost of freight.
<b>Re Exports</b>	Re Exports are goods leaving the country that were previously imported into Timor-Leste and comprise less than 50 percent Timor-Leste value by content at time of export.

## Key Statistics

US\$'000						
	2006	2007	2008	2009	2010	2011
Merchandise Imports	87,695	199,369	258,429	282,595	246,311	318,778
Non Merchandise Imports	13,107	6,764	10,154	12,501	51,780	20,852
<b>Total Imp.(incl. Non merch.imp)</b>	<b>100,802</b>	<b>206,133</b>	<b>268,584</b>	<b>295,096</b>	<b>298,091</b>	<b>339,630</b>
Exports	8,455	7,734	12,899	8,491	16,395	13,202
Re - Exports	52,231	11,445	36,307	36,021	25,265	40,051
<b>Total Export (incl. Re-Exports)</b>	<b>60,685</b>	<b>19,179</b>	<b>49,207</b>	<b>34,512</b>	<b>41,660</b>	<b>53,253</b>

US\$'000						
	2006	2007*	2008	2009	2010	2011
trade balance ( Total Exports - Total Imports )	-40,117	-186,954	-219,377	-260,584	-256,431	-286,377
Total Value of Coffee exports (includes exports of green beans, Roasted beans and ground coffee)	7,999	-	12,632	8,291	15,987	11,923
Largest Value Trading Partner ( March. Imports )	ID 37,733	-	ID 109,840	ID 92,105	ID 95,976	ID 97,810
Largest Value Trading Partner ( exports)	USA 3,447	-	DE 3,395	USA 2,873	USA 7,340	DE 5,629

\*2007 - Includes trend estimates for missing months

- Data are not available

**Key Statistics (cdt).**

---

**IMPORTS OF MAJOR COMMODITIES (2011) - TOP 10**

<b>HS Chapter</b>	<b>Description</b>	<b>Value (\$'000)</b>
85	Electrical machinery and equipment and parts thereof sound recorders and reproducers; television etc.	99,381
27	Mineral fuels, mineral oils and products of their distillation	47,654
87	Vehicles, others than railway or tramway rolling stock and parts and accessories thereof	33,711
73	Iron or steel articles	23,493
84	Nuclear reactors, boilers, machinery and mechanical appliances parts thereof	20,714
94	Furniture; bedding, mattresses supports, cushions and similar stuffed furnishing; lamps and lighting	12,828
22	Beverage, spirits and vinegar	9,275
10	Cereal	9,182
40	Rubber and articles thereof,;	3,414
39	Plastics and articles thereof	3,297
<b>Total Value for top 10</b>		<b>262,949</b>
<b>All Other Commodities</b>		<b>71,837</b>
<b>Total Merchandise Imports</b>		<b>334,786</b>



## IMPORTS - MAJOR TRADING PARTNERS (2011)

---

Country of Origin	Value (US\$'000)
1. Indonesia	97,810
2. Finland	68,610
3. China, Peoples Republic of	59,913
4. Singapore	21,524
5. Australia	15,365
6. Malaysia	13,751
7. Thailand	8,069
8. Viet Nam	7,449
9. Japan	5,872
10. Portugal	4,768
11. India	3,711
12. Brazil	3,283
13. Korea Republic of	1,400
14. Netherlands	1,121
15. United Kingdom	1,012
	313,658
Total	5,118
Other	318,776
Total Merchandise Imports	

## Imports Tables

Table 1: Trade Statistics Summary by Month - 2011

TIMOR-LESTE TRADE STATISTICS SUMMARY						
Month/Year	2011					
	Imports			Exports		
	Merch. Imp. (US\$'000)	Non Merch.Imp. (US\$'000)	Total (US\$'000)	Exports (US\$'000)	Re-exports (US\$'000)	Total (US\$'000)
January	3,635	242	3,876	0	60	60
February	1,898	678	2,576	0	0	0
March	1,850	48	1,898	0	0	0
<b>Quarter</b>						
<b>Total (1)</b>	<b>7,383</b>	<b>968</b>	<b>8,350</b>	<b>0</b>	<b>60</b>	<b>60</b>
April	1,554	35	1,589	0	0	0
May	1,406	0	1,406	0	0	0
June	34,664	3,930	38,594	2,336	25	2,361
<b>Quarter</b>						
<b>Total (2)</b>	<b>37,624</b>	<b>3,965</b>	<b>41,589</b>	<b>2,336</b>	<b>25</b>	<b>2,361</b>
July	32,462	2,941	35,403	2,057	2,067	4,124
August	61,274	3,970	64,870	3,544	1,679	5,222
September	65,540	3,739	69,278	2,604	16,858	19,462
<b>Quarter</b>						
<b>Total (3)</b>	<b>159,276</b>	<b>10,650</b>	<b>169,551</b>	<b>8,205</b>	<b>20,604</b>	<b>28,808</b>
October	35,554	2,318	37,872	1,011	4,533	5,545
November	40,593	3,325	43,918	1,039	13,464	14,503
December	38,349	0	38,349	611	1,364	1,975
<b>Quarter</b>						
<b>Total (4)</b>	<b>114,496</b>	<b>5,643</b>	<b>120,139</b>	<b>2,661</b>	<b>19,362</b>	<b>22,023</b>
<b>2011 Total</b>	<b>318,779</b>	<b>21,226</b>	<b>339,629</b>	<b>13,202</b>	<b>40,051</b>	<b>53,253</b>

Notes :

**Merchandise Trade** Imports exclude values of goods imported for use by foreign Embassies and High Commissions-there goods are deemed to be "Non Merchandise " Trade Imports.

**Exports** are goods comprising at least 50 percent Timor-Leste content by value.

**Re- Exports** are goods for export that were previously imported into Timor-Leste and comprise less Than 50 percent Timor-Leste content by value, the main Re-Exports is heavy equipment.

Individual values may not aggregate to totals due to rounding.

**Table 2: Merchandise Imports by Chapter Heading (HS2)**

HS2	HS Description	Value (\$'000)				
		2006	2008	2009	2010	2011
01	Animals; live	8	0	18	52	25
02	Meat and edible meat offal	579	3,008	3,919	5,116	2,042
03	Fish and crustaceans, molluscs and other aquatic invertebrates	44	249	443	662	153
04	Dairy produce; birds' eggs; natural honey; edible products of animal origin, not elsewhere specified or included	682	2,263	2,662	3,320	853
05	Animal originated products; not elsewhere specified or included	1	2	10	24	5
06	Trees and other plants, live; bulbs, roots and the like; cut flowers and ornamental folia	4	11	29	9	1
07	Vegetables and certain roots and tubers; edible	2,771	1,146	806	1,284	591
08	Fruit and nuts, edible; peel of citrus fruit or melons	164	548	587	811	299
09	Coffee, tea, mate and spices	91	417	594	873	431
10	Cereals	5,516	5,485	35,169	14,123	9,182
11	Products of the milling industry; malt, starches, insulin, wheat gluten	1,490	1,938	1,320	1,870	1,368
12	Oil seeds and oleaginous fruits; miscellaneous grains, seeds and fruit, 'industrial or medicinal plants; straw etc.	567	603	738	637	173
13	Lac; gums, resins and other vegetable saps and extracts	13	15	7	18	6
14	Vegetable plaiting materials; vegetable products not elsewhere specified or included	2	1	34	5	8
15	Animal or vegetable fats and oils and their cleavage products prepared animal fats; animal or vegetable waxes	1,157	966	1,170	2,000	1,743
16	Meat, fish or crustaceans, mollusks or other aquatic invertebrates; preparations thereof	249	673	929	1,255	1,128
17	Sugars and sugar confectionery	710	1,536	1,580	2,079	1,831
18	Cocoa and cocoa preparations	97	171	18	160	174
19	Preparations of cereals, flour, starch or milk; pastry cooks' products	1,609	4,720	4,223	4,694	3,156
20	Preparations of vegetables, fruit, nuts or other parts of plants	220	572	830	1,174	3,287
21	Miscellaneous edible	209	1,396	3,679	4,066	859
22	Beverages, spirits and vinegar	1,842	6,749	7,793	12,197	9,275
23	Food industries, residues and wastes thereof; prepared animal fodder	95	146	64	247	313
24	Tobacco and manufactured tobacco substitutes	1,245	2,750	2,479	3,533	2,589
25	Salt; sulphur; earths, stone; plastering materials, lime and cement	1,548	4,933	5,015	7,046	7,940

26	Ores, slag and ash	17	163	253	103	1,424
27	Mineral fuels, mineral oils and products of their distillation; bituminous substances; mineral waxes	29,070	71,123	38,040	41,151	47,654
28	Inorganic chemicals; organic and inorganic compounds of precious metals; of rare earth metals	29	101	323	400	136
29	Organic chemicals	58	93	179	542	185
30	Pharmaceutical products	1,832	8,100	5,269	3,736	2,991
31	Fertilizers	17	32	205	202	127
32	Tanning or dyeing extracts; tannins and their derivatives; dyes, pigments and other colouring matter; paints etc.	278	507	753	1,183	946
33	Essential oils and resinoids; perfumery, cosmetic or toilet preparations	291	635	624	729	680
34	Soap, organic surface-active agents; washing, lubricating polishing or scouring preparations	871	1,387	1,862	2,330	1,550
35	Albuminoidal substances; modified starches; glues; enzymes	43	62	128	178	217
36	Explosives; pyrotechnic products; matches; pyrophoric alloys; certain combustible preparations	11	26	6	22	9
37	Photographic or cinematographic goods	21	19	17	47	23
38	Chemical products n.e.s.	126	789	871	1,664	513
39	Plastics and articles thereof	1,744	2,017	2,643	4,114	3,297
40	Rubber and articles thereof	800	1,876	2,824	2,704	3,414
41	Raw hides and skins (other than furskins) and leather	0	5	2	11	1
42	Articles of leather; saddlery and harness; travel goods, handbags and similar containers; articles of animal gut	73	191	1,697	237	484
43	Furskins and artificial fur; manufactures thereof	2	1	4	107	5
44	Wood and articles of wood; wood charcoal	745	1,452	2,406	2,612	2,192
45	Cork and articles of cork	2	15	19	39	29
46	Manufactures of straw, esparto or other plaiting materials; basket ware and wickerwork	5	10	9	10	4
47	Pulp of wood or other fibrous cellulosic material; recovered (waste and scrap) paper or paperboard	3	1	4	10	8
48	Paper and paperboard; articles of paper pulp, of paper or paperboard	1,982	2,233	4,115	2,647	2,333
49	Printed books, newspapers, pictures and other products of the printing industry; manuscripts etc.	501	417	384	1,606	373
50	Silk	5	9	3	14	14
51	Wool, fine or coarse animal hair; horsehair yarn and woven fabric	1	9	21	18	3
52	Cotton	15	13	15	41	5
53	Vegetable textile fibres; paper yarn and woven fabrics of paper yarn	2	2	8	3	1
54	Man-made filaments	12	5	0	7	6
55	Man-made staple fibres	22	27	16	8	22

56	Wadding, felt and nonwovens, special yarns; twine, cordage, ropes and cables and articles thereof	112	264	355	1,647	465
57	Carpets and other textile floor coverings	32	30	33	69	79
58	Fabrics; special woven fabrics, tufted textile fabrics, lace, tapestries, trimmings, embroidery	11	58	31	225	59
59	Textile fabrics; impregnated, coated, covered or laminated; textile articles of a kind suitable for industrial use	7	20	51	225	109
60	Fabrics; knitted or crocheted	9	30	30	20	550
61	Apparel and clothing accessories; knitted or crocheted	185	479	500	461	610
62	Apparel and clothing accessories; not knitted or crocheted	390	544	545	2,847	595
63	Textiles, made up articles; sets; worn clothing and worn textile articles; rags	808	998	1,655	1,970	2,112
64	Footwear; gaiters and the like; parts of such articles	282	673	573	855	754
65	Headgear and parts thereof	32	28	188	50	240
66	Umbrellas, sun umbrellas, walking-sticks, seat sticks, whips, riding crops; and parts thereof	16	31	32	41	47
67	Feathers and down, prepared; and articles made of feather or of down; artificial flowers; articles of human hair	4	25	29	33	37
68	Stone, plaster, cement, asbestos, mica or similar materials; articles thereof	138	452	1,053	832	2,694
69	Ceramic products	316	815	1,153	2,086	1,245
70	Glass and glassware	139	274	553	570	1,001
71	Natural, cultured pearls; precious, semi-precious stones; precious metals, metals clad with precious metal etc.	342	53	21	451	428
72	Iron and steel	1,213	2,304	3,922	4,679	4,676
73	Iron or steel articles	1,357	4,125	5,149	11,121	23,493
74	Copper and articles thereof	61	216	334	305	682
75	Nickel and articles thereof	0	3	25	9	1
76	Aluminium and articles thereof	189	445	1,020	634	1,078
78	Lead and articles thereof	2	20	10	8	9
79	Zinc and articles thereof	258	692	1,228	1,622	1,263
80	Tin; articles thereof	1	7	9	9	296
81	Metals; n.e.s., cermets and articles thereof	6	1	34	14	102
82	Tools, implements, cutlery, spoons and forks, of base metal; parts thereof, of base metal	444	1,529	2,139	1,981	1,675
83	Metal; miscellaneous products of base metal	823	1,060	1,584	3,190	1,943
84	Nuclear reactors, boilers, machinery	4,512	17,333	22,770	23,742	20,714

	and mechanical appliances; parts thereof					
85	Electrical machinery and equipment and parts thereof; sound recorders and reproducers; television etc.	6,191	17,568	25,198	23,404	99,381
86	Railway, tramway locomotives, rolling-stock and parts thereof; railway or tramway track fixtures and fittings	10	217	147	432	148
87	Vehicles; other than railway or tramway rolling stock, and parts and accessories thereof	5,830	43,869	58,486	55,263	33,711
88	Aircraft, spacecraft and parts thereof	67	1,697	3,883	1,557	175
89	Ships, boats and floating structures	6	178	386	421	165
90	Optical, photographic, cinematographic, measuring, checking, medical or surgical instruments and apparatus	1,375	4,823	5,189	4,362	3,144
91	Clocks and watches and parts thereof	15	77	124	162	41
92	Musical instruments; parts and accessories of such articles	9	71	161	105	52
93	Arms and ammunition; parts and accessories thereof	2	1,914	1,866	2,227	209
94	Furniture; bedding, mattresses, mattress supports, cushions and similar stuffed furnishings; lamps and lighting	1,528	2,773	3,219	3,956	12,628
95	Toys, games and sports requisites; parts and accessories thereof	226	601	1,076	2,484	1,728
96	Miscellaneous manufactured articles	255	513	798	884	350
97	Works of art; collectors' pieces and antiques	6	8	12	25	22
<b>Total Merchandise Imports</b>		<b>87,699</b>	<b>258,429</b>	<b>282,594</b>	<b>288,635</b>	<b>334,786</b>



**Table 3 : Merchandise Import by Major Countries of Origin (2011)**

Country of Origin	Value (\$'000)
1. Indonesia	97,810
2. Finland	68,610
3. China, Peoples Republic of	59,913
4. Singapore	21,524
5. Australia	15,365
6. Malaysia	13,751
7. Thailand	8,069
8. Viet Nam	7,449
9. Japan	5,872
10. Portugal	4,768
11. India	3,711
12. Brazil	3,283
13. Korea Republic of	1,400
14. Netherlands	1,121
15. United Kingdom	1,012
16. Denmark	617
17. New Zealand	530
18. United States of America	518
19. Brunei Darussalam	338
20. Fiji	296
21. Bangladesh	245
22. Philippines	243
23. Germany	243
24. Italy	235
25. Taiwan	179
26. Russia	155
27. South Africa	145
28. Lao Peoples Democratic Rep	143
29. Belgium	122
<b>Total</b>	<b>317,667</b>
<b>Other</b>	<b>1,109</b>
<b>Total Merchandise Imports</b>	<b>318,776</b>

**Table 4 : Merchandise Import of Major commodities by country of Origin ( 2011 )**

HS Code	Goods Description	Country Of Origin	Value (\$US)
27101931	<b>DIESEL</b>	Indonesia	13,910,188
27101931		Singapore	2,598,773
27101931		Australia	26,257
27101931		Malaysia	9,817,988
<b>27101931 Total</b>			<b>27,353,661</b>
10061000	<b>Rice in the husk (Paddy or rough)</b>	Vietnam	50,675
10061000		Thailand	21,677
10061000		Singapore	3,591
10061000		Indonesia	1,088
10061000		Australia	962
10061000		China, Peoples Republic of	537
10061000		Korea Republic of	
<b>10061000 Total</b>			<b>78,677</b>
27101131	<b>Motor Spirit</b>	Indonesia	11,223,486
<b>27101131 Total</b>			<b>11,223,486</b>
<b>87032300</b>		Japan	3,966,123
87032300		Thailand	2,659,108
87032300		Singapore	2,529,692
87032300		Australia	2,385,592
87032300		Indonesia	1,424,847
87032300		New Zealand	284,410
87032300		Brunei Darussalam	185,181
87032300		China, Peoples Republic of	120,655
87032300		Germany	65,485
87032300		Hong Kong	55,940
87032300		Denmark	51,497
87032300		Philippines	44,084
87032300		United Kingdom	32,888
87032300		Italy	32,725
87032300		South Africa	31,256
87032300		India	690
<b>87032300 Total</b>			<b>13,870,173</b>
27101921	<b>Jet Fuel</b>	Australia	1,538,890
27101921		Singapore	362,127



27101921		Indonesia	107,410
<b>27101921 Total</b>			<b>2,008,427</b>
85175000	Apparatus for Carrier-Current Or for digital system	China, Peoples Republic of	93,036
85175000		Switzerland	54,338
85175000		Taiwand	42,642
85175000		Portugal	29,197
85175000		Australia	16,688
85175000		Denmark	7,869
85175000		United States of America	3,393
85175000		United Kingdom	2,875
<b>85175000 Total</b>			<b>250,038</b>
24022000	Cigarettes Containing Tobacco	Indonesia	2,566,019
24022000		Australia	15,386
24022000		Hong Kong	686
<b>24022000 Total</b>			<b>2,582,091</b>
10064000	Broken Rice	Singapore	460,991
10064000		Viet Nam	333,450
10064000		Indonesia	328
<b>10064000 Total</b>			<b>794,769</b>
25232900	Portland Cement (excl.white)	Indonesia	4,851,772
25232900		China, Peoples Republic of	1,341,175
25232900		Malaysia	211
25232900		Australia	154
<b>25232900 Total</b>			<b>4,026,955</b>
87089900	Parts and Accessories, for Vehicles of 87.01 to 87.05	Australia	537,357
87089900		Indonesia	302,357
87089900		Singapore	210,357
87089900		Japan	152,819
87089900		China, Peoples Republic of	143,121
87089900		Thailand	44,775
87089900		United Kingdom	36,652
87089900		Germany	16,013
87089900		Malaysia	13,922
87089900		Italy	12,244
87089900		Denmark	5,319

87089900		Korea Republic of	5,133
87089900		Philippines	302
87089900		Portugal	93
87089900		United States of America	91
<b>87089900 Total</b>			<b>1,480,751</b>

30032000	Medicaments of Other antibiotic not for retail Sale	India	588,230
30032000		Indonesia	309,829
30032000		New Zeland	120,739
30032000		Australia	98,528
30032000		Netherland	86,642
30032000		Korea Republic of	48.300
30032000		Belgium	21,285
30032000		China, Peoples Republic of	3,852
30032000		United Kingdom	1,600
30032000		Singapore	1,600
30032000		Papua New Guinea	1,562
30032000		United States of America	452
30032000		Sweden	87
30032000		Philippines	18
30032000		Fiji	11
<b>30032000 Total</b>			<b>1,283,054</b>

85291000	Aerials and aerial reflectors Of all kinds parts thereof	China, Peoples Republic of	1,277,089
85291000		Portugal	277,767
85291000		Indonesia	219,495
85291000		Japan	139,712
85291000		United States of America	71,746
85291000		Singapore	40.960
85291000		Hong Kong	12,888
85291000		Korea Republic of	6,537
85291000		Germany	4,230
85291000		United Kingdom	1,224
85291000		Australia	398
85291000		Finland	169
85291000		Malaysia	108
85291000		Papua New Guinea	92
85291000		Bangladesh	84
<b>85291000 Total</b>			<b>2,002,499</b>

87019000	Tractors (excl. Tractors of 87.09)	Australia	183,701
87019000		China, Peoples Republic of	100,140
665,028			
87019000		India	58,493
87019000		Malaysia	18,393
87019000		Indonesia	5,436
<b>87019000</b>	<b>Total</b>		<b>366,163</b>
90189000	Instruments and apparatus, for Medical, surgical .....Sciences	Singapore	750,687
90189000		Indonesia	253,657
90189000		India	66,887
90189000		Australia	18,273
90189000		United States of America	2,435
90189000		Pakistan	675
90189000		China, Peoples Republic of	6
<b>90189000</b>	<b>Total</b>		<b>1,092,620</b>
19021900	Uncooked pasta, not containing Eggs, not stuffed	Indonesia	1,814,492
19021900		China, Peoples Republic of	7,489
19021900		Singapore	6,468
19021900		Philippines	1,531
19021900		Australia	373
19021900		Thailand	145
19021900		Japan	143
19021900		Malaysia	67
<b>19021900</b>	<b>Total</b>		<b>1,830,708</b>
48189000	Household, Sanitary or hospital Articles of piper etc	Australia	3,028
4818900		China ,Peoples Republic of	1,027
4818900		Singapore	408
4818900		Indonesia	289
<b>4818900</b>	<b>Total</b>		<b>4,752</b>
83024100	Mountings, fittings, etc, for buildings Of base metal	Indonesia	839,827
83024100		Japan	581,111
83024100		United Kingdom	218,311
83024100		China, Peoples Republic of	183,473
83024100		Portugal	56,451
83024100		Australia	12,158
83024100		Singapore	6,323
83024100		Korea Republic of	4,482

<b>83024100 Total</b>			<b>1,902,136</b>
15111000	Crude Palm Oil	Indonesia	145,470
<b>15111000 Total</b>			<b>145,470</b>
84711000	Analogue or brid automatic data Processing machines	Indonesia	367,117
84711000		Singapore	247,781
84711000		Australia	157,319
84711000		Denmark	133,693
84711000		Malaysia	110,049
84711000		Portugal	54,925
84711000		United States of America	48,625
84711000		Japan	41,652
84711000		New Zealand	11,267
84711000		Netherlands	5,014
84711000		United Arab Emirates	4,516
84711000		China, Peoples Republic of	2,662
84711000		Korea Republic of	1,899
84711000		Finland	1,739
84711000		United Kingdom	1,370
84711000		Brunei Darussalam	508
84711000		India	181
84711000		Kazakhstan	116
<b>84711000 Total</b>			<b>1,190,433</b>
07082000	Beans, fresh or Chilled	Australia	642
07082000		Singapore	575
<b>07082000 Total</b>			<b>1,217</b>
94060000	Prefabricated building	China, Peoples republic of	171,469
94060000		Indonesia	48,134
94060000		Singapore	5,290
94060000		Australia	252
<b>94060000 Total</b>			<b>225,145</b>
<b>Total (major Commodities)</b>			<b>73,731,228</b>
<b>Other Merchandise Imports</b>			<b>245,064,773</b>
<b>Total Merchandise Imports</b>			<b>318,778,001</b>

## Exports Table

---

Table 5 : Exports by Major Trading Partners (2011)

Country of Destination	Value (\$'000)
Germany	5,629
United States of America	2,911
Taiwan	688
Japan	670
Singapore	614
Australia	557
Indonesia	463
China, Peoples Republic of	417
Korea Republic of	299
Mexico	239
United Kingdom	230
Portugal	118
Spain	110
Ethiopia	101
Israel	67
Belgium	38
Malaysia	25
Cambodia	20
Italy	2
Philippines	2
Switzerland	1
<b>Total Export</b>	<b>13,201</b>



**Table 6 : Re-Exports by Country of Destination (2011)**

Country of Destination	Value (\$'000)
China, Peoples Republic of	13,910,601
Australia	12,411,367
United States of America	7,806,160
India	2,365,300
Singapore	2,263,232
Norway	423,734
Indonesia	250,123
Portugal	179,646
Hong Kong	99,041
Malaysia	58,250
New Zealand	25,459
Sri Lanka	17,780
Brazil	16,263
Lebanon	15,624
Ethiopia	13,300
Lao People's Democratic Rep.	12,270
United Kingdom	9,799
Sudan	9,799
Albania	9,600
Thailand	8,126
Japan	5,737
Spain	5,000
Russia	4,010
Viet Nam	3,000
Mozambique	2,000
Philippines	1,910
Switzerland	1,550
Germany	900
Swaziland	450
Korea Republic of	70
Finland	60
Ireland, Republic of	18
Afghanistan	5
<b>Total</b>	<b>39,930</b>
<b>Other</b>	<b>120</b>
<b>Total Re-Exports</b>	<b>40,050</b>

**Table 7: Coffee Exports by Country of Destination (2011)**

Country of Destination	Quantity (Kg)	Value (\$'US)
Germany	5,981,910	5,628,722
United States of America	4,220,328	2,870,080
Japan	656,330	669,467
Singapore	1,014,421	512,305
Indonesia	329,530	443,975
Taiwan	2,342,400	304,320
Korea Republic of	560,100	295,800
Australia	635,200	287,330
Mexico	360,000	238,833
United Kingdom	115,200	230,400
Portugal	38,400	111,360
China, Peoples Republic of	38,400	111,360
Spain	211,200	110,400
Israel	38,400	67,200
Belgium	19,200	38,400
<b>Total</b>	<b>16,561,019</b>	<b>11,922,952</b>

Notes: The above aggregates values for exports of coffee in various forms – green beans, roasted beans and ground coffee.

**Table 8: Coffee Exports by Month, Quantity and Value**

Month	2006		2008		2009		2010		2011	
	Qty	Value	Qty	Value	Qty	Value	Qty	Value	Qty	Value
	(Kg.000)	(\$'000)	(Kg.000)	(\$'000)	(Kg.000)	(\$'000)	(Kg.000)	(\$'000)	(Kg.000)	(\$'000)
January	683	674	135	101	915	568	874	175	0	0
February	725	773	634	325	400	409	18	7	0	0
March	440	366	115	52	209	2 93	19	207	0	0
April	74	91	303	342	304	306	64	83	0	0
May	76	115	198	181	58	83	0	0	0	0
June	0	0	514	310	153	125	726	899	709	1,612
July	0	0	4,921	2,229	1,173	821	813	2,911	2,403	1,721
August	2,058	1,806	2,345	2,105	863	945	4,894	2,488	6,574	3,541
September	1,226	1,196	4,518	1,930	822	1,099	15,560	3,420	2,282	2,583
October	1,621	1,306	4,026	2,502	3,805	2,268	760	1,943	1,353	1,008
November	1,224	1,065	2,885	2,044	744	608	1,183	2,440	3,038	1,010
December	472	607	450	511	448	765	760	1,416	198	444
<b>Total</b>	<b>8,877</b>	<b>7,999</b>	<b>21,044</b>	<b>12,632</b>	<b>9,942</b>	<b>8,291</b>	<b>25,671</b>	<b>15,987</b>	<b>16,557</b>	<b>11,519</b>

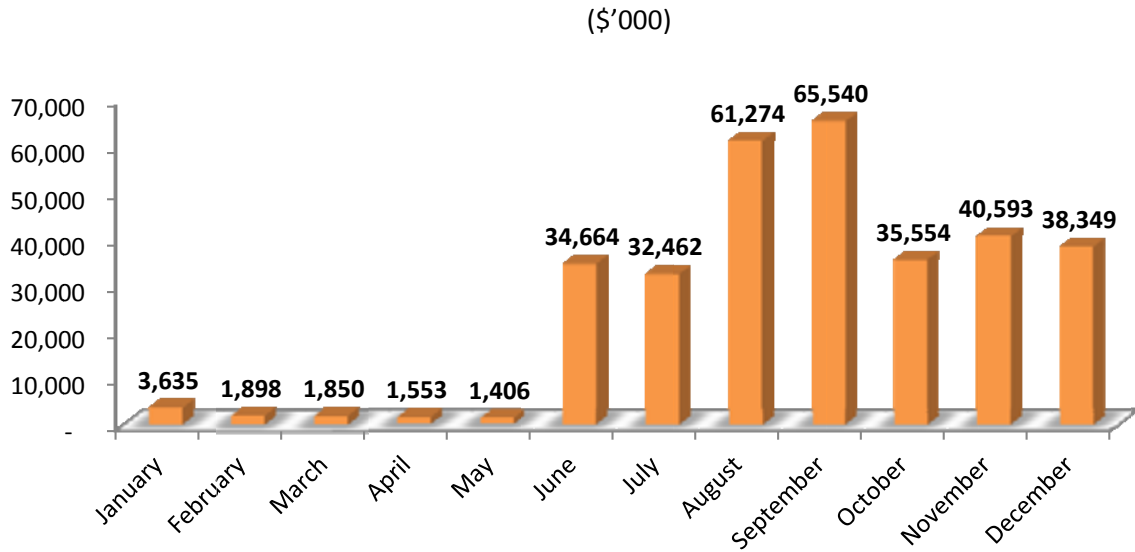
Notes ; " Data for 2007 are not available"



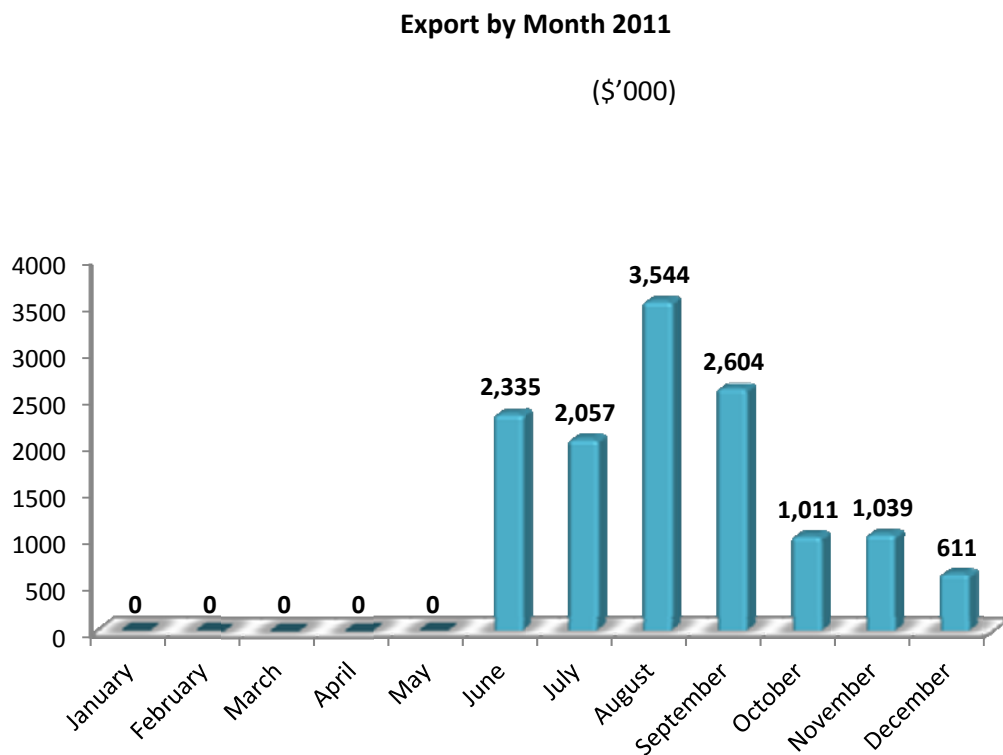
# Charts

---

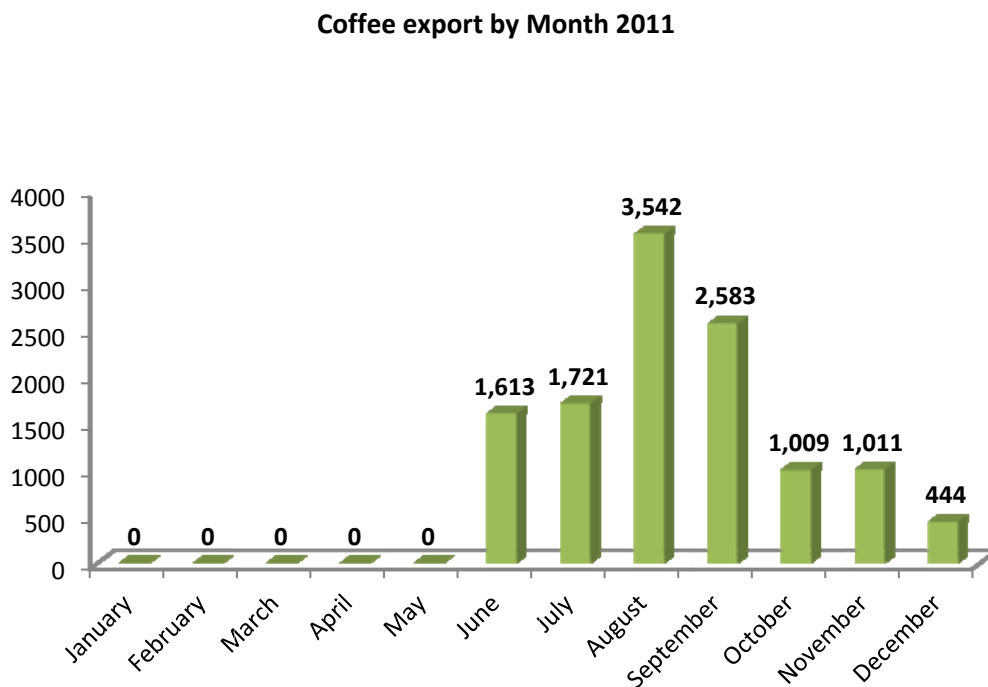
Charts 1 : Merchandise Imports by month (2011)



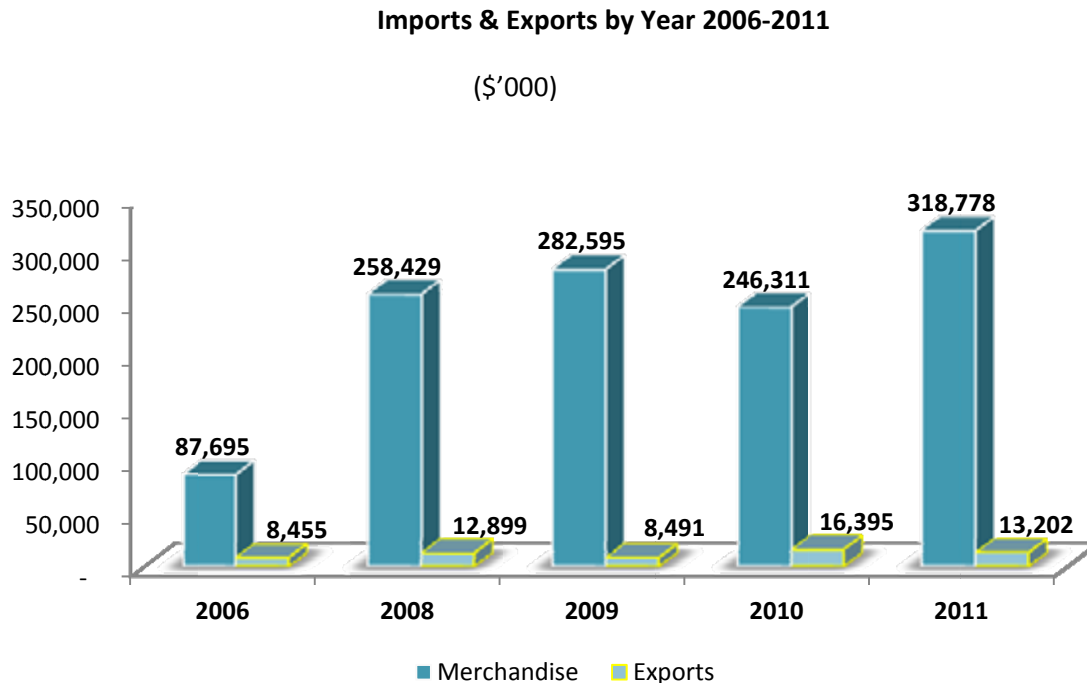
**Chart 2 : Export by Month (2011)**



**Chart 3 : Coffee export by Month (2011)**



**Chart 4 : Imports & Export by Year (2006-2011)**



**Chart 5 : Coffee Export by Year (2011)**

