

Socialization of the Strategic Development Plan in Laulara Subdistrict

Sosializasaun Planu Strategico Desenvolvimento iha Subdistritu Laulara

11 September 2010

**Photos and captions from La'ó Hamutuk.
For more information, see**

<http://www.laohamutuk.org/econ/SDP/10SDPindex.htm>

**Foto no liafuan husi La'ó Hamutuk.
Atu hetan informasaun tan, hare**

<http://www.laohamutuk.org/econ/SDP/10SDPindexTe.htm>



**Sozializasaun Planu Strategico Desemvolvimento Nasional
Laulara, Aileu. 11 Setembru 2010**



**Chefe Suco makes requests
Xefe Suco husu buat balu**



**Prime Minister Xanana Gusmão listens
Primeiru Ministru Xanana Gusmão rona**



**PM gives presentation after a dinner break.
PM fo presentasaun despois han kalan.**



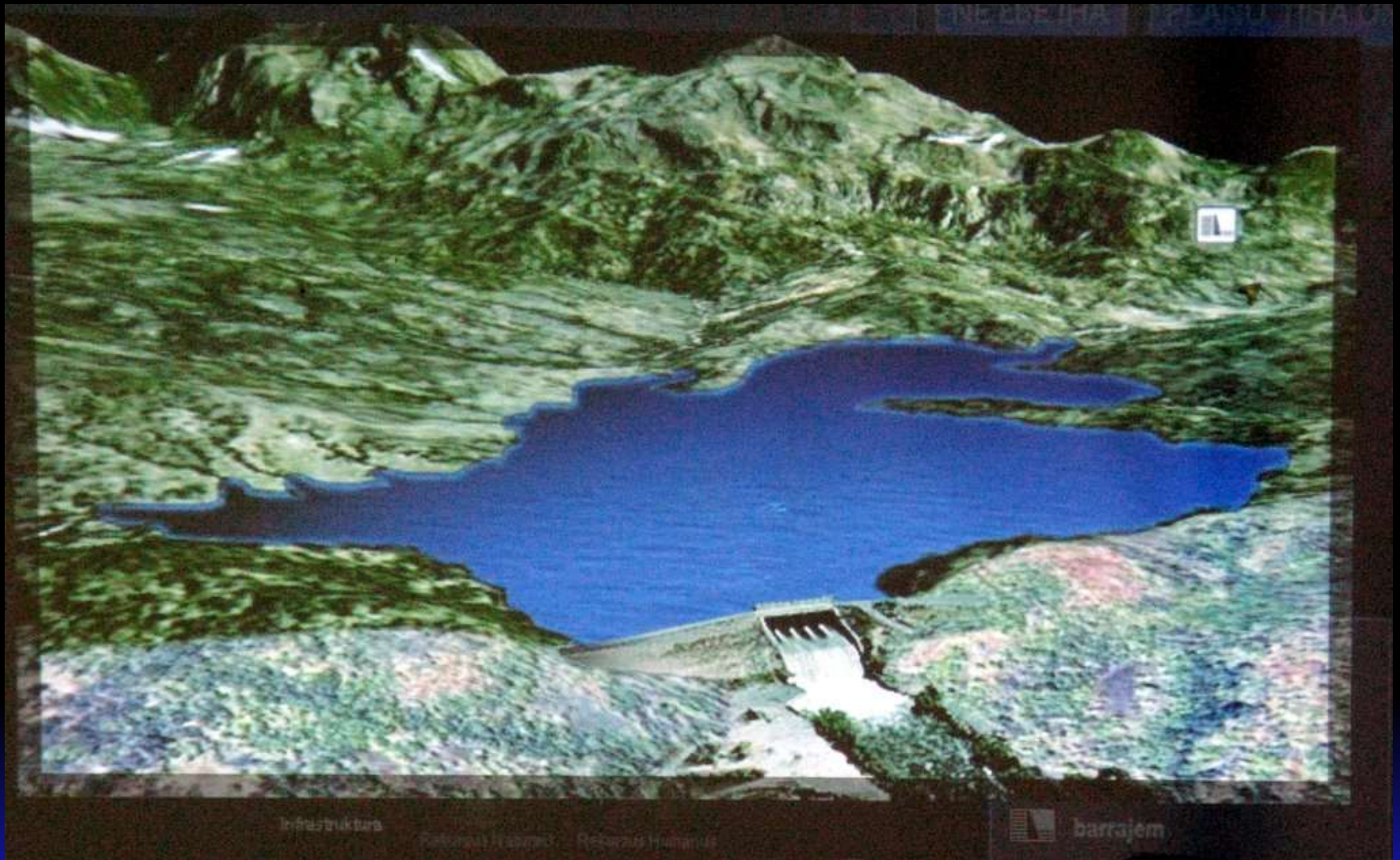
Plan for roads in the future
Planu ba dalam iha future



Future water resource plans
Planu ba rekursu be'e iha future



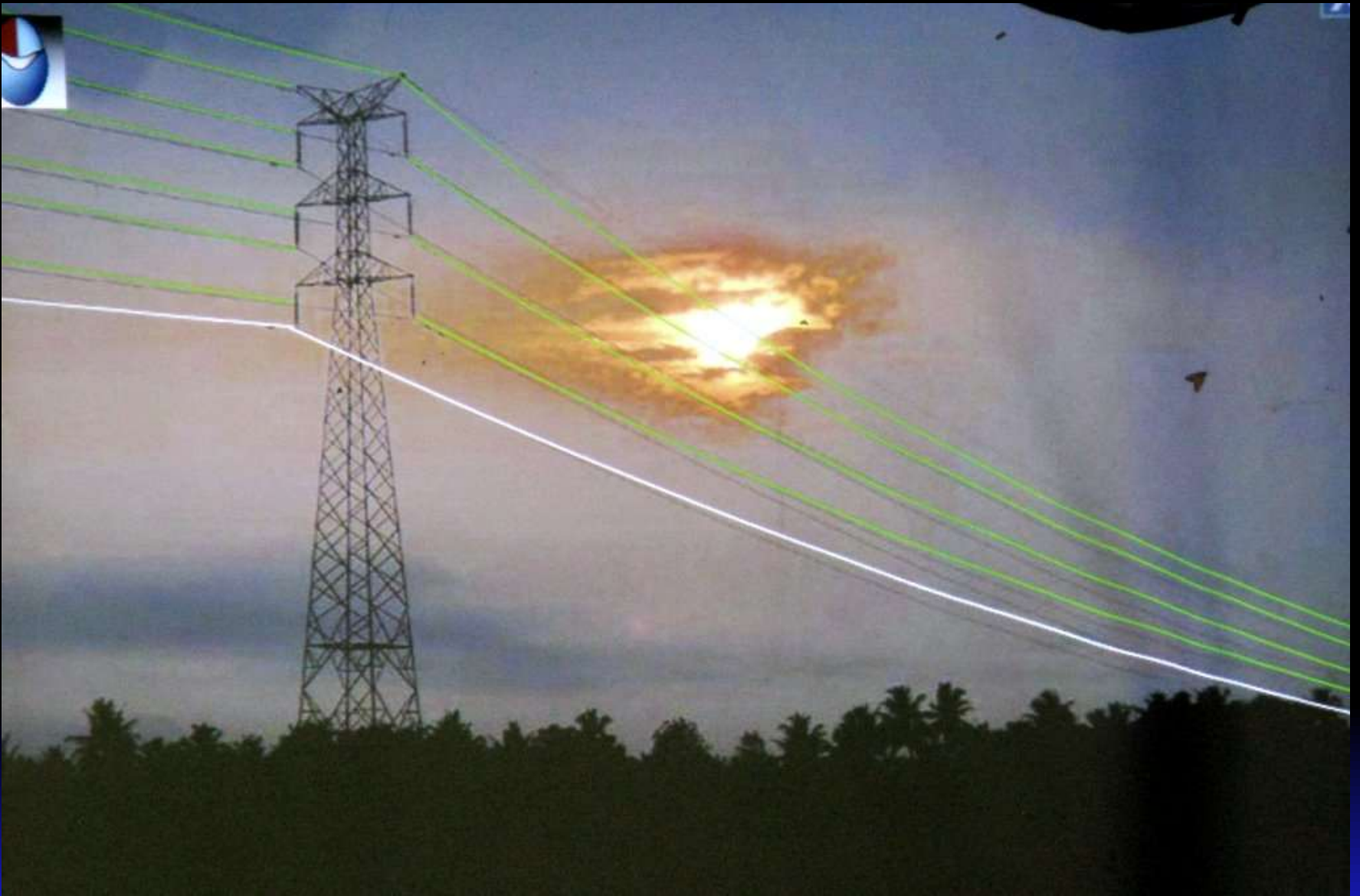
**Proposed water system in Lautem district
Planu ba sistema be'e iha distritu Lautem**



**Typical dam and reservoir
Borajem no lago tipiku**

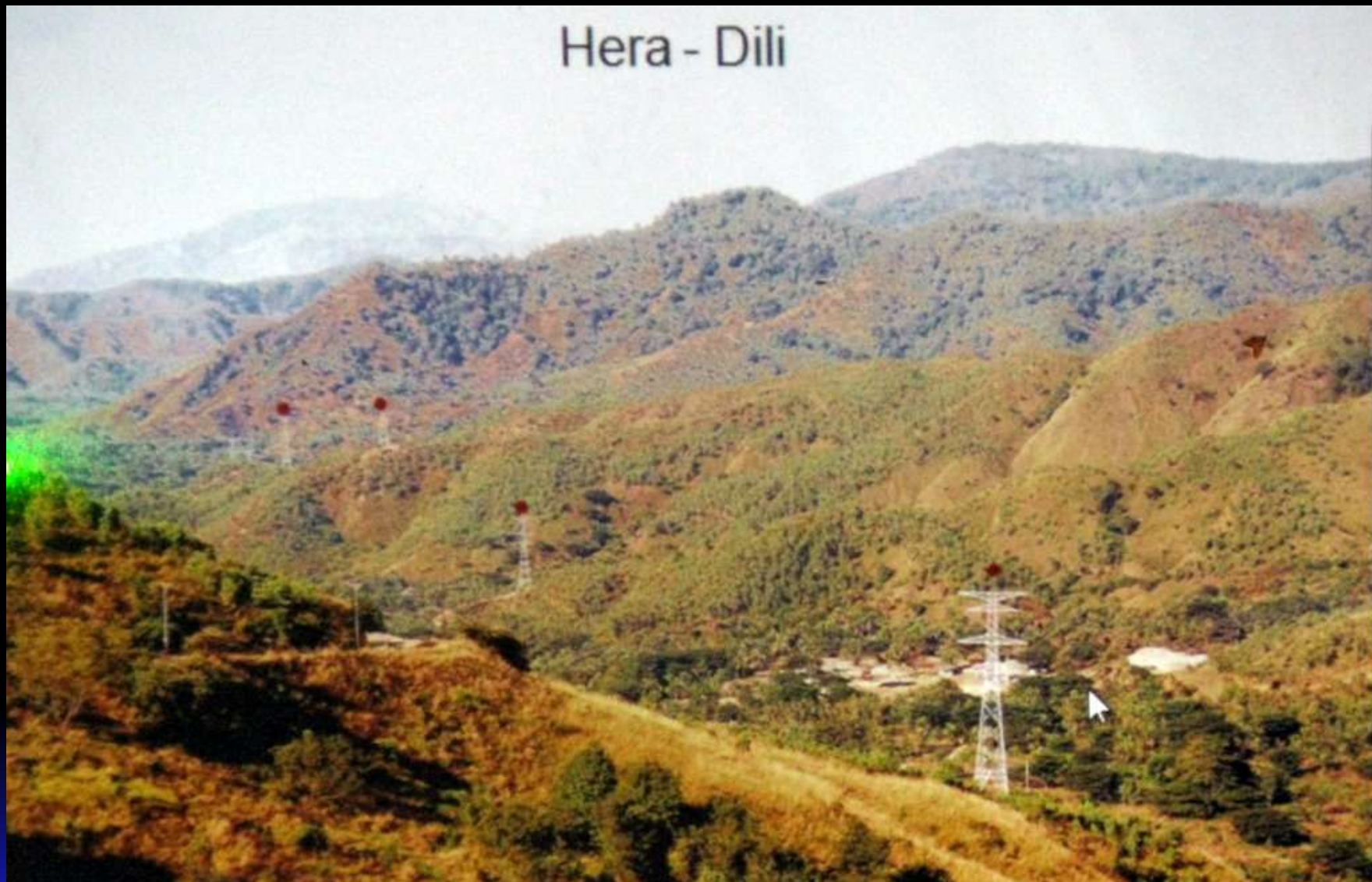


Proposed national electric grid
Planu rede eletrisidade nasional



**Future power lines (green) and fiber optic data cable (white)
Fil ba eletridade (matak) no data (mutin) iha futuru**

Hera - Dili



**Recently built electric towers
Torre eletrisidade foin hahu**



**Wind power will supplement heavy oil.
Eletricidade husi anim bele aumenta oleu pesado.**



NE'EBE IHA

PLANU TIHA ONA



Planu Dezenvolvimentu Aeroportu

- ne'be iha
- hadi'a
- dezenvolvimentu

Proposed national airports
Planu ba aeroportu nasional sira



Typical domestic airport
Aeroporto domestika tipiku



**Some visions of airports
Vizaun aeroporto balun**

MASTER PLAN OF BACAU AIR PORT



Planu aeroportu Bacau



**Future expanded Dili airport
Aeroportu Dili sei haboot**



**Proposed expansion of port system
Porto foun iha future**



**Proposed port and industrial area in Tibar
Planu ba portu no aerea industria iha Tibar**



**Proposed tourist facilities in Lautem district
Planu ba fasilidade turistiku iha distritu Lautem**

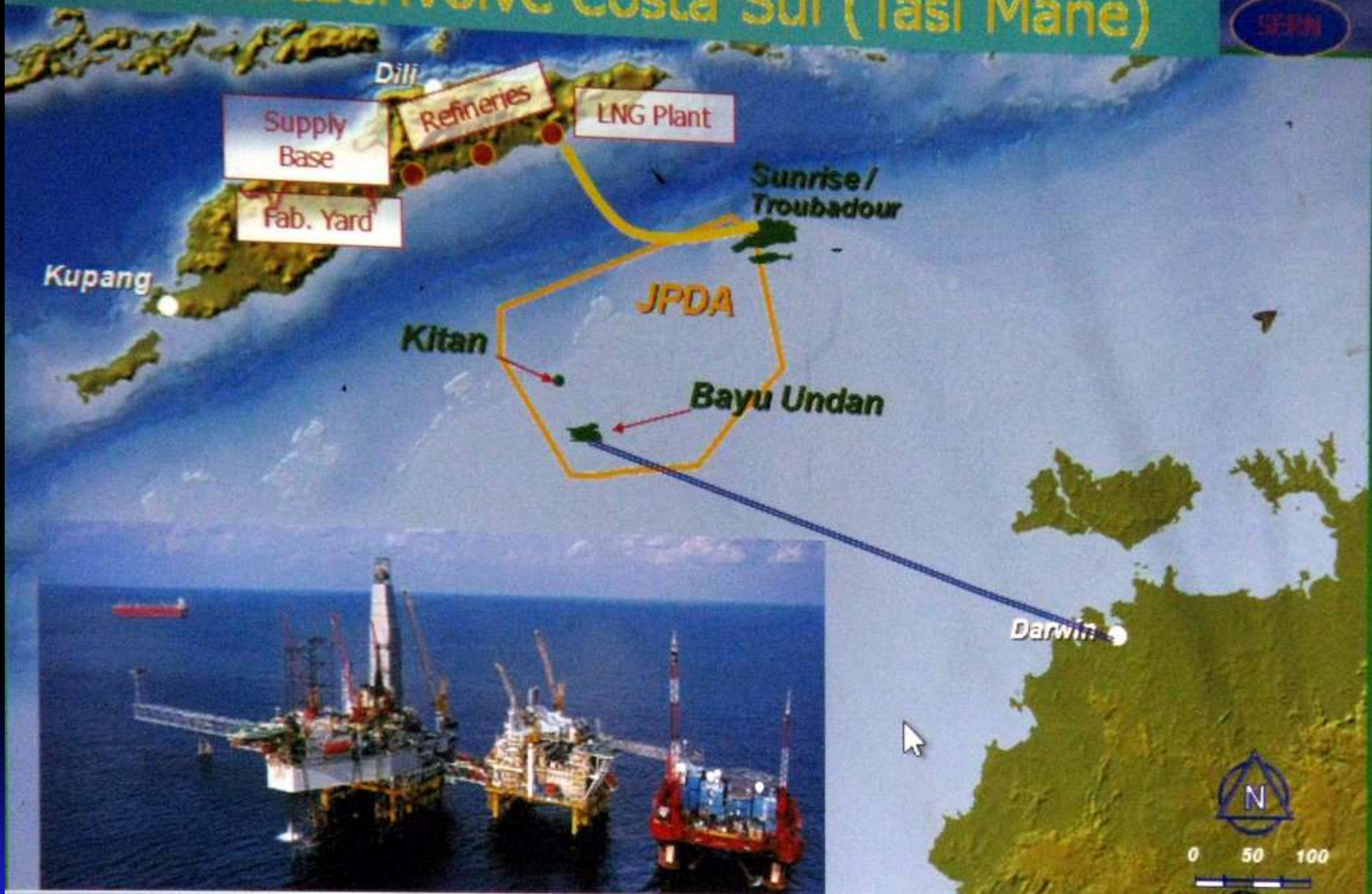


Typical tourist resort project
Ezemplu projeitu turistiku



**Offshore oil resources provide essential revenues
Rendimentu esensial mai husi mina iha tasi okos**

Oinsa Dezenvolve Costa Sul (Tasi Mane)



Proposed south coast petroleum corridor, and current Bayu-Undan platform
Planu ba koridor petroleu iha costa sul, no plataforma Bayu-Undan agora



LOGISTIC SUPPLY BASE (SUAI)

Proposed petroleum logistics supply base in Suai
Proposta "supply base" iha Suai



Proposed oil refinery in Betano
Proposta refinaria mina iha Betano



Proposed LNG plant in Beacu
Proposta fabrika LNG iha Beacu



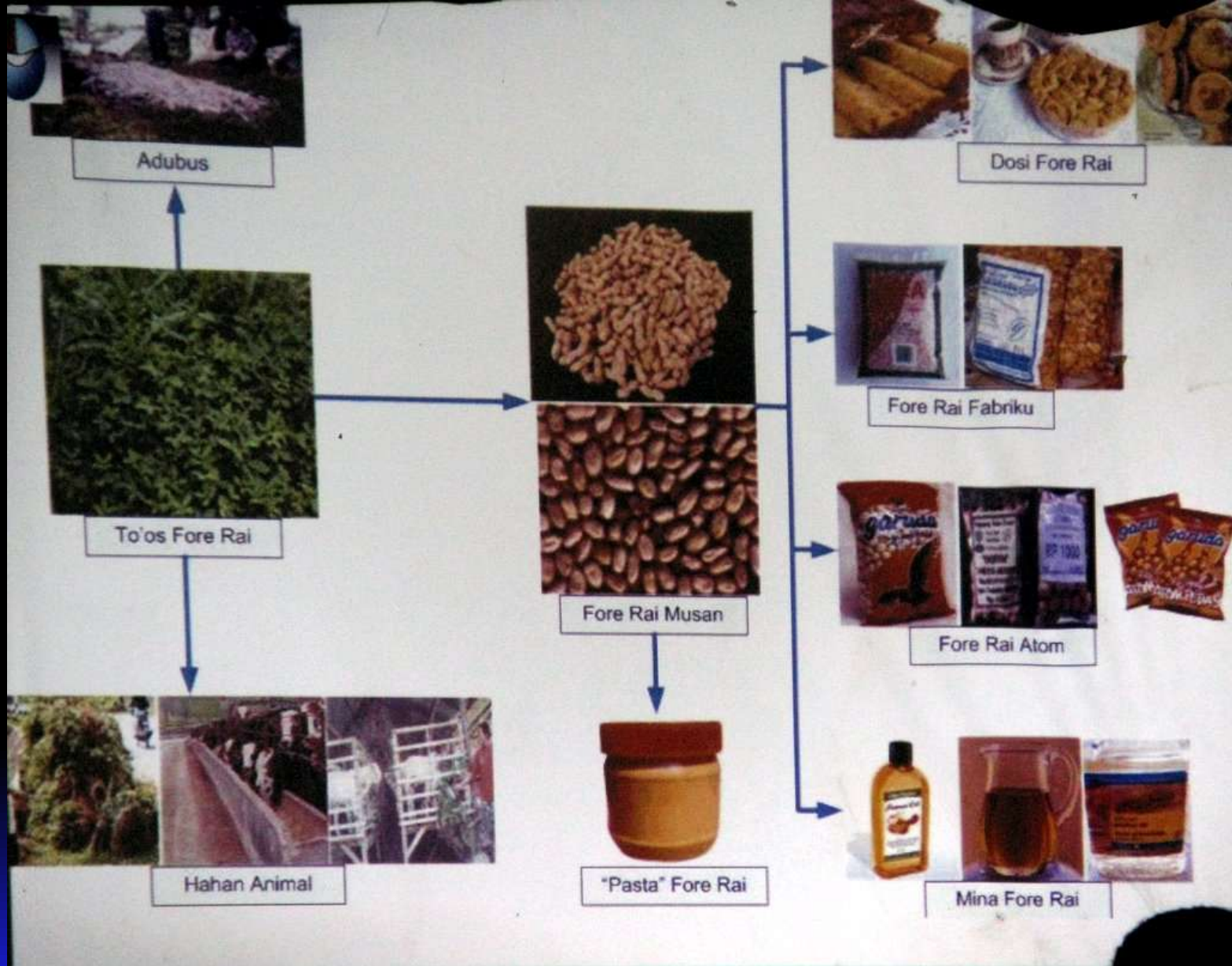
Possible on-shore mineral deposits
Minerais bele hetan iha rai okos



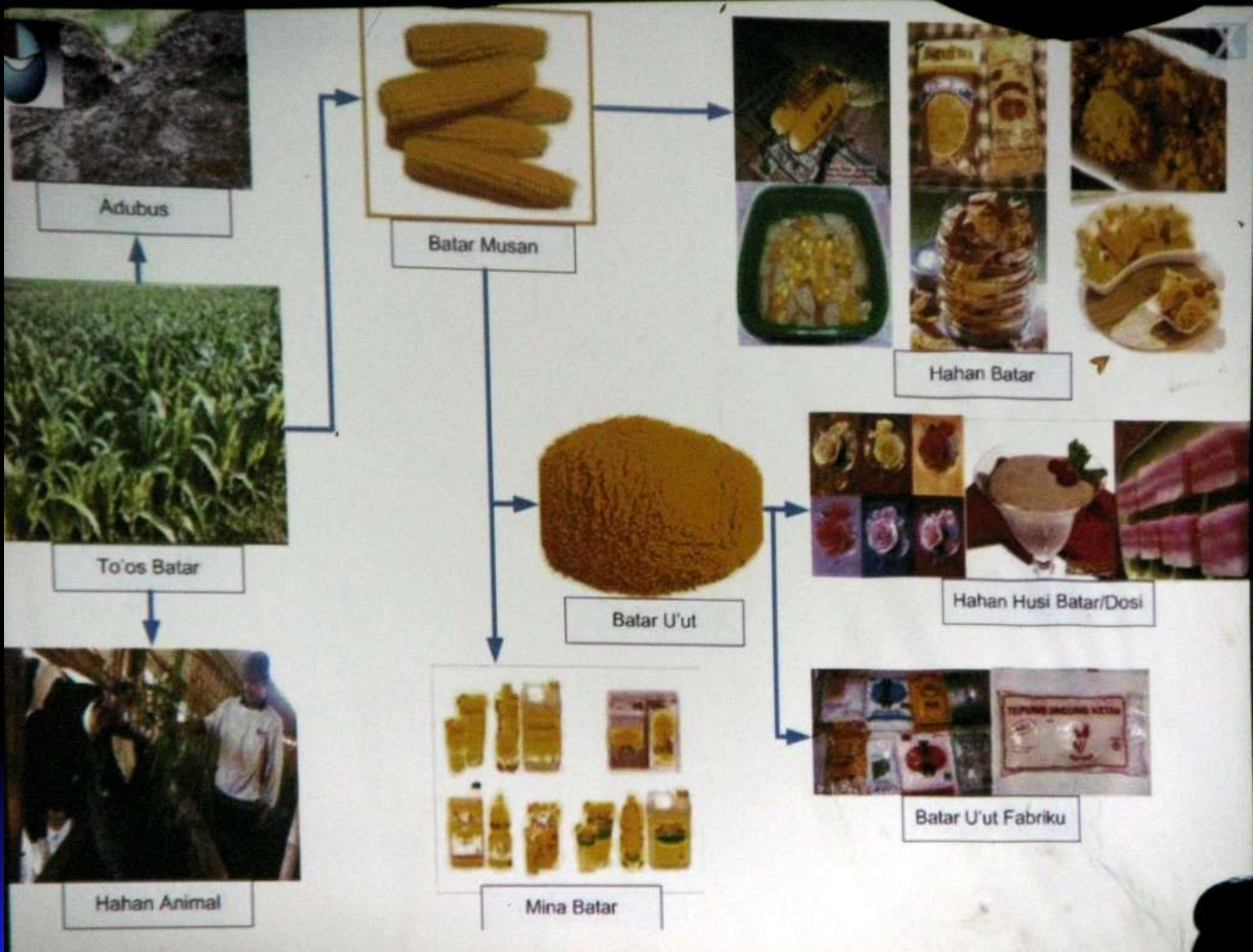
Mineral deposits in Baucau district
Minerais iha distritu Baucau



Possible agribusiness facilities
Planu ba facilidades agro-industrial



Products which can be manufactured from peanuts
Produto balu bele halo husi forerai



Products which can be manufactured from corn
Produto balu bele halo husi batar



**The Prime Minister continued until 2:00 am.
Primeiru Ministru kolia to'o tuku 2.00 madrugada.**